

Bioprocess Equipment



About Biostream

Biostream is a Dutch-based manufacturer of a comprehensive range of incubation shakers, incubators, fermenters, and bioreactors, supporting applications from laboratory through to production scale. Built on a strong legacy of service, maintenance, and customization, Biostream has evolved into a full-solution provider, offering a robust portfolio of standardized and modular bioreactor platforms.

Headquartered in Doetinchem, the Netherlands, near the German border, Biostream is strategically positioned within Europe's life sciences and bioprocessing corridor. With additional locations in China and the United States, we operate as a truly global brand, supporting customers worldwide with local presence and expertise.



Our Vision

At Biostream, we aim to be more than an equipment supplier. We are your long-term bioprocessing partner. Our mission is to deliver total solutions, supported by a team of experienced fermentation researchers and engineers who deeply understand your needs, both today and as your process evolves. We believe biotechnology is one of the most advanced and complex scientific domains, and selecting the right equipment is not just a matter of price or specification. It requires:

- Deep understanding of your current and future needs
- Confidence in technical support and adaptability
- A partner that invests in long-term collaboration

Why Choose Biostream?

1. True Modularity Flexibility

No need to invest in everything upfront. You can start with a compact setup and scale as your process develops.

Biostream equipment is designed for unlimited sensor and actuator connectivity, with fully modular configurations that allow your system to evolve with your process requirements, without high initial CAPEX.

2. Grow With Your Equipment

Your process isn't static and your equipment shouldn't be either.

Unlike rigid systems, Biostream units are designed for scalable adaptation, making it easy to adjust hardware and software for new applications, new scales, or improved processes.

3. One Software, All Scales

From benchtop to production. Same interface, same logic.

Our Java-based, license-free software is identical across all systems (lab, pilot, and production scale). No retraining, no reconfiguring: just seamless scale-up.

4. Full Access Software, No Hidden Paywalls

Make changes without waiting (or paying) for vendor approval.

Biostream software is fully open to the user. Adjust control loops, add devices, and integrate data.

5. Lower Service Costs, Smart Diagnostics

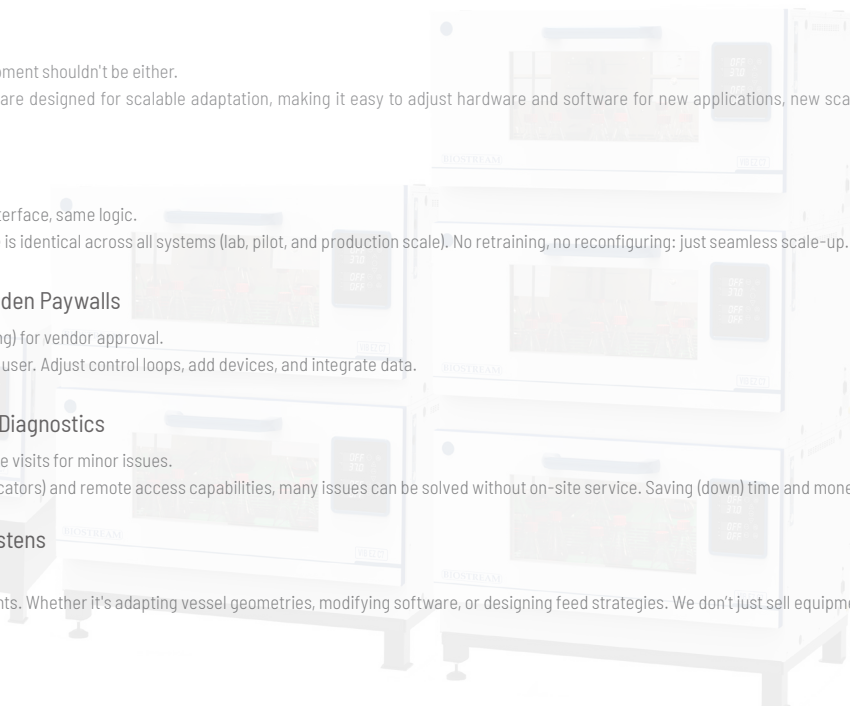
Support when you need it. No expensive visits for minor issues.

With built-in PCB diagnostics (LED indicators) and remote access capabilities, many issues can be solved without on-site service. Saving (down) time and money.

6. Engineering Support That Listens

We're your partner, not just a vendor.

We co-engineer solutions with our clients. Whether it's adapting vessel geometries, modifying software, or designing feed strategies. We don't just sell equipment, we build solutions together.



Contents

Incubation Shaker	2
> VIB EZ C7 Incubation Shaker	3
> VIB EZ C5 Incubation Shaker	6
> VIB EZ C3 Incubation Shaker	9
> VIB EZ B7 Incubation Shaker	11
> VIB EZ B5 Incubation Shaker	14
> VIB EZ B3 Incubation Shaker	17
CO₂ Incubator	19
> CO ₂ Incubator	20
> Peltier-cooled CO ₂ Incubator	22
> Tri-Gas Incubator (CO ₂ / O ₂ / N ₂)	23
> Constant Temperature Incubator	25
> Large-scale Constant Temperature Incubator	26
> Peltier-cooled Incubator	27
> Shaker for CO ₂ Incubator/Cell Culture Roller Rack	28
Auxiliary Product	33
> Peristaltic Pump	35
> Compressed Air System	36
> Steam Generators	38



Incubation Shaker

Incubation Shaker for Cell Culture

VIB EZ C7 Incubation Shaker

VIB EZ C5 Incubation Shaker

VIB EZ C3 Incubation Shaker

Incubation Shaker for Microbial Culture

VIB EZ B7 Incubation Shaker

VIB EZ B5 Incubation Shaker

VIB EZ B3 Incubation Shaker



Cell Culture Version

VIB EZ C7 Incubation Shaker

VIB EZ C7 Shaking incubator successfully combines flexibility, user-friendly operation and operational safety with the optimum utilization of space. Thanks to its modular construction and downwards-opening door, can either be a single unit for use on or under the laboratory bench, or operate as part of a stacked system. The system can be easily expanded in the future to a two or three deck configuration, ensuring adaptability to changing needs.

Application

VIB EZ C7 can be used for different applications.

- > Mammalian cells, with active CO₂ control function
- > Insect cell

Features

- > The inner walls of the incubation chamber and the magnetic driver are all made of stainless steel and easy to clean.
- > The non-belt magnetic drive provides low noise, low vibration.
- > Intuitive control panel with bright LED display (0.1°C resolution) and push button keypad.
- > High temperature limit setting and open door alarm.
- > The drop-down door is designed to serve as a shelf for the tray.
- > The shakers are equipped with RS232 and RS485 interface.

Fully encapsulated motor, safe and stable

Featuring a full magnetic drive system, our motor operates efficiently under low voltage conditions, consuming minimal power consumption, producing negligible heat, and having no adverse impact on the incubator's temperature.

In line with the principles of hygiene and cleanliness, the entire drive unit adopts a fully enclosed design, safeguarding the motor and electrical components from moisture and microbial contamination. This design ensures convenience during cleaning and decontamination.

Multiple temperature control methods

BIOSTREAM offers three types of shakers to meet various laboratory environmental needs.

Without Cooling unit

- > Generally, the optimal temperature for mammalian cell culture is 37°C. Since laboratory ambient temperatures typically do not exceed 30°C a shaker without cooling unit is sufficient to meet experimental requirements

With Peltier Cooling unit

- > Solid-state cooling with no moving parts such as compressors, offering quiet, vibration-free operation and high-precision temperature control
- > Compact in size for high product integration
- > Environmentally friendly, utilizing no chemical refrigerants

With Compressor Cooling unit

- > High cooling efficiency, capable of reaching lower experimental temperatures compared to Peltier cooling
- > Utilizes R290, an environmentally friendly refrigerant, making it a green and sustainable solution
- > Features stable performance and a long operational lifespan



Precise CO₂ control

Precise CO₂ control is essential when working with mammalian, plant cell cultures, or algae. A controlled CO₂ atmosphere within the shaking incubator enables precise pH adjustments of the culture medium.

- > Dual Beam IR CO₂ Sensor
- > Measurement range: 0.1-20 %
- > CO₂ Accuracy: ± 1%FS CO₂
- > The CO₂ consumption is only 1.5l/h. (at 5% CO₂)
- > The CO₂ supply: max. 0.5 bar overpressure

Humidity (Optional)

Controlled humidity is crucial when working with microtiter plates or during extended flask-based cell cultures, as it effectively minimizes evaporation. Our specially designed humidification system can achieve humidity levels of up to 85% relative humidity (r.h.). The heated double glass door ensures reliable condensation prevention.



UV sterilization (Optional)

The UV unit is placed on the chamber ceiling and beside the circulation fan. The UV light cannot reach sample and sterilization is operated during culturing.

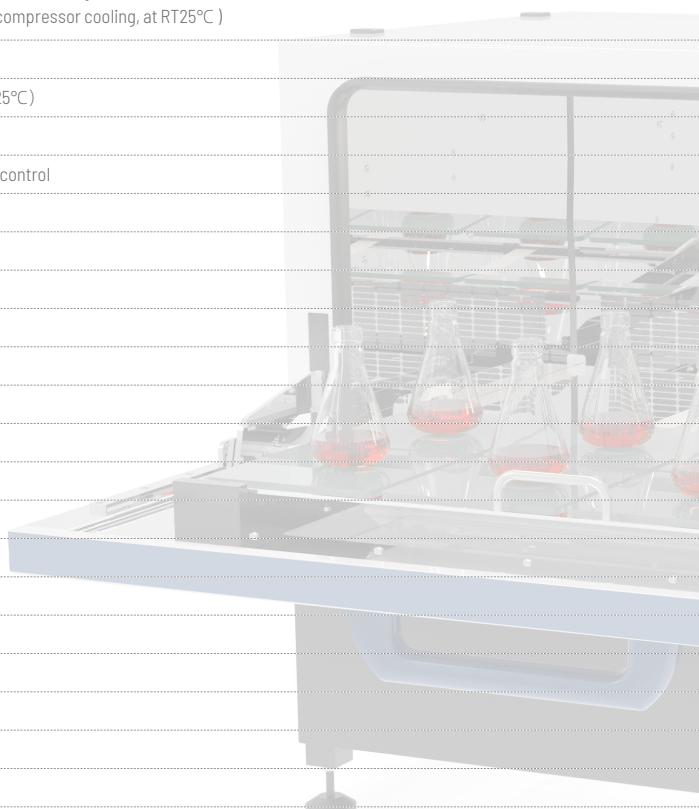


Specifications

Model	VIB EZ C7		
Temperature	Range	RT+7°C -60°C (without cooling unit, at RT25°C) RT-5°C -60°C (with peltier cooling, at RT25°C) RT-15°C -60°C (with compressor cooling, at RT25°C)	
	Control accuracy	±0.2°C	
	Uniformity	±0.2°C (at 37°C /RT25°C)	
	Timer	1min-99h59min	
	Program control	9-segment program control	
CO ₂	Measurement range	0.1-20 %	
	Resolution	0.1%	
	Accuracy	± 1% FS	
Shaking	Speed	20-400rpm*	
	Control accuracy	± 1% FS	
	Shaking diameter	25 or 50mm	
Humidity Control Range	75%-85%		
Chamber Volume	250L		
Platform (w x d)	850 x 470 mm		
	50ml x131		
	100ml x 91		
	250ml x 48		
	Max Capacity (with adhesive tray)	500ml x 31	
		1000ml x 19	
2000ml x 13			
5000ml x 6			
Dimensions (w x d x h)	1 deck	1082 x 850 x 605 (no base, without cooling)	
	2 decks	1082 x 850 x 1205 (no base)	
	3 decks	1082 x 850 x 1950 (with 13cm base)	
Weight per deck with/without cooling	220/240kg		

*Testing condition: 20-400rpm (without load)

20-250rpm (with load, 15 x 1000ml flask, 20% filling)



Accessories

Adhesive tray

Sticky Plate can be loaded with any kind of vessels with a smooth base. Even at a speed of up to 350 rpm the vessel sticks to the plate.



Order No.	Description
B0200002	adhesive tray, 850 x 470 mm
B6100113	Adherent layer, 200 x 200mm

Universal tray

The Universal tray employ a drilled grid for individual loadings of test tube holders, microplate, and deep well plates.

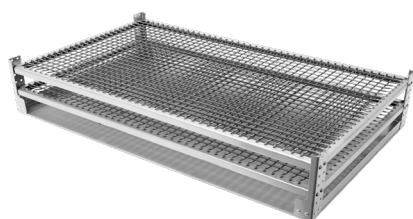


Order No.	Description
B0200001	Universal tray, 850 x 470 mm

Adjustable bar tray



Order No.	Description
B0200008	Tray with 8 fixing bars
B0200009	1 additional fixing bar for B0200008



Multi-Purpose tray

Order No.	Description
B0200010	The multi-purpose tray is made of stainless steel and can be used for a diverse range of unusual specifications.

Stainless steel erlenmeyer flask clamp

For fixing of shaken items, there is an extensive range of retaining clamp: Standard stainless steel clamps for flasks of 50 to 5000ml.



Order No.	Description	Order No.	Description
B6103550	50ml	B6103555	2000ml
B6103551	100ml	B6103560	3000ml
B6103552	250ml	B6103558	4000ml
B6103553	500ml	B6103561	5000ml
B6103554	1000ml		

Stainless steel clamps for fernbach flask

Order No.	Description	Order No.	Description
B6103547	1.8L	B6103557	2.8L

Test tube rack

A range of tube racks are available for various diameters and lengths. For the best axial mixing at the optimum angle, the support rack can be tilted. By loosening both fixing screws, the rack can be simply detached from the holding frame connected to the shaker.



Test tube rack for long type

Order No.	Description	Order No.	Description
B6101342	144 x Ø8mm	B6101352	64 x Ø14mm
B6101343	100 x Ø10mm	B6101354	36 x Ø16mm
B6101347	72 x Ø12mm		

Rack for plastic test tube

Order No.	Description
B6101362	16x Ø30mm (50 mL centrifuge tubes)

VIB EZ C5 Incubation Shaker

The VIB EZ C5 Shaker is designed to optimize laboratory space efficiently, offering flexibility, user-friendly operation, and enhanced safety. Its modular structure and side-sliding door allow the incubator to be used either on or under the lab bench, as well as in a space-saving double-stacked configuration.

Applications

All laboratory applications require the right shaking method and optimal incubation conditions to ensure reliable results.

- > Cell Culture.
- > Insect cell cultivation requires gentle and consistent agitation.
- > Ideal for molecular biology applications, such as protein expression.
- > Precise temperature control with optional illumination functionality.

The VIB EZ C5 features an LED display and a membrane keypad, designed for easy operation even when wearing gloves.

Multiple temperature control methods

BIOSTREAM offers three types of shakers to meet various laboratory environmental needs.

Without Cooling unit

- > Generally, the optimal temperature for mammalian cell culture is 37°C. Since laboratory ambient temperatures typically do not exceed 30°C a shaker without cooling unit is sufficient to meet experimental requirements

With Peltier Cooling unit

- > Solid-state cooling with no moving parts such as compressors, offering quiet, vibration-free operation and high-precision temperature control
- > Compact in size for high product integration
- > Environmentally friendly, utilizing no chemical refrigerants

With Compressor Cooling unit

- > High cooling efficiency, capable of reaching lower experimental temperatures compared to Peltier cooling
- > Utilizes R290, an environmentally friendly refrigerant, making it a green and sustainable solution
- > Features stable performance and a long operational lifespan



Precise CO₂ control

Precise CO₂ control is essential when working with mammalian, plant cell cultures, or algae. A controlled CO₂ atmosphere within the shaking incubator enables precise pH adjustments of the culture medium.

- > Dual Beam IR CO₂ Sensor
- > Measurement range: 0.1-20 %
- > CO₂ Accuracy: ± 1 %FS CO₂
- > The CO₂ consumption is only 1.5l/h. (at 5% CO₂)
- > The CO₂ supply: max. 0.5 bar overpressure

Humidity (Optional)

Controlled humidity is crucial when working with microtiter plates or during extended flask-based cell cultures, as it effectively minimizes evaporation. Our specially designed humidification system can achieve humidity levels of up to 85% relative humidity (r.h.). The heated double glass door ensures reliable condensation prevention.

UV sterilization (Optional)

The UV unit is placed on the chamber ceiling and beside the circulation fan. The UV light cannot reach sample and sterilization is operated during culturing.



Specifications

Model	VIB EZ C5	
Temperature	Range	RT+7°C -60°C (without cooling unit, at RT25°C) RT-5°C - 60°C (with peltier cooling, at RT25°C) RT-15°C - 60°C (with compressor cooling , at RT25°C)
	Accuracy	±0.1°C
	Uniformity	±0.2°C (at 37°C / RT.25°C)
Timer Program control		9-segment program control can be set
		Timer : 1min-99h59min
CO ₂	Range	0.1~20%
	Resolution	0.10%
	Accuracy	±1%FS
Shaking	Speed	20-400rpm
	Control accuracy	± 1%FS
	Shaking diameter	25 or 50mm
Humidity Control		75%-85%
Chamber Volume		160L
Platform (w x d)		450 x 450 mm
		50ml x 64
		100ml x 44
		250ml x 25
Max Capacity		500ml x 16
		1000ml x 9
		2000ml x 6
		3000ml x 4
Dimensions (w x d x h)	1 deck	800 x 695 x 635mm
	2 decks	800 x 695 x 1270mm
Weight per deck without cooling/with compressor cooling		Approx. 140kg/170kg

Accessories

Adhesive tray

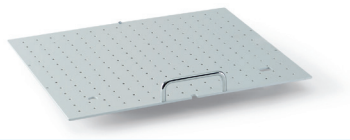
Sticky Plate can be loaded with any kind of vessels with a smooth base. Even at a speed of up to 250 rpm the vessel sticks to the plate.



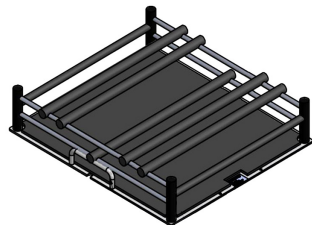
Order No.	Description
B0300002	Adhesive tray, 450 x 450 mm
B0300004	Double tray with adherent layer, Layer spacing 165mm
B6100113	Adherent layer, 200 x 200mm

Universal tray

The Universal tray employ a drilled grid for individual loadings of test tube holders, microplate, and deep well plates.

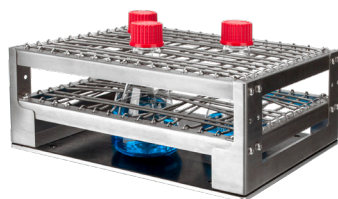


Order No.	Description
B0300001	Universal tray, 450 x 450 mm



Adjustable bar tray

Order No.	Description
B0300008	Tray with 8 fixing bars
B0300009	1 additional fixing bar for B0300008



Multi-Purpose tray

Order No.	Description
B0300010	The multi-purpose tray is made of stainless steel and can be used for a diverse range of unusual specifications.

Stainless steel erlenmeyer flask clamp

For fixing of shaken items, there is an extensive range of retaining clamp: Standard stainless steel clamps for flasks of 50 to 5000ml.



Order No.	Description	Order No.	Description
B6103550	50ml	B6103555	2000ml
B6103551	100ml	B6103560	3000ml
B6103552	250ml	B6103558	4000ml
B6103553	500ml	B6103561	5000ml
B6103554	1000ml		

Stainless steel clamps for fernbach flask

Order No.	Description	Order No.	Description
B6103547	1.8L	B6103557	2.8L

Test tube rack

A range of tube racks are available for various diameters and lengths. For the best axial mixing at the optimum angle, the support rack can be tilted. By loosening both fixing screws, the rack can be simply detached from the holding frame connected to the shaker.



Test tube rack for long type

Order No.	Description	Order No.	Description
B6101342	144 x Ø8mm	B6101352	64 x Ø14mm
B6101343	100 x Ø10mm	B6101354	36 x Ø16mm
B6101347	72 x Ø12mm		

Rack for plastic test tube

Order No.	Description
B6101362	16x Ø30mm (50 mL centrifuge tubes)

VIB EZ C3 Incubation Shaker

Laboratory space is both scarce and expensive. The Biostream VIB EZ C3 successfully combines flexibility, user-friendly operation and operational safety with the optimum utilization of space. Thanks to its modular construction, the Biostream VIB EZ C3 can either be a single unit for use on or under the laboratory bench or operate as part of a stacked system.

Features

- > The oscillation unit is embedded in the incubator and can use culture bottles with a maximum volume of 2L.
- > The double-sided door design allows the door opening direction to be adjusted according to the laboratory environment for convenient operation (standard setting is left door opening at factory).
- > Embedded circulation fan ensures uniformity of gas circulation and temperature field inside the box.
- > Stainless steel inner cavity is easy to clean and prevent bacterial contamination.
- > Alarm function is automatically activated when temperature, speed deviates or the box door is opened.
- > Oscillation stops when the box door is opened. Independent safety temperature control prevents overheating.
- > Peltier refrigeration technology is adopted, with compact design, lower energy consumption, no vibration and no refrigerant pollution to the environment.

Multiple temperature control methods.

BIOSTREAM offers two types of shakers to meet various laboratory environmental needs.

Without Cooling unit

- > Generally, the optimal temperature for mammalian cell culture is 37°C. Since laboratory ambient temperatures typically do not exceed 30°C a shaker without cooling unit is sufficient to meet experimental requirements

With Peltier Cooling unit

- > Solid-state cooling with no moving parts such as compressors, offering quiet, vibration-free operation and high-precision temperature control
- > Compact in size for high product integration
- > Environmentally friendly, utilizing no chemical refrigerants

Specifications

Model	VIB EZ C3	
Temperature	Range (°C)	RT+7°C - 60°C (without cooling unit, at RT25°C) RT-10°C - 60°C (with peltier cooling, at RT25°C)
	Control accuracy (°C)	±0.1
	Uniformity (°C)	±0.2 (at 37°C / RT.25°C)
	Timer function	Temperature & CO ₂ : without timer function Shaking speed timer range :Continuous or up to 99 hours 59 min
Shaking	Speed (rpm)	30-300
	Control accuracy	± 1%FS
	Shaking diameter (mm)	25 or 50mm
CO ₂	Measurement range	0.1-20%
	Resolution	0.10%
	Accuracy	±1%FS
Chamber Volume (L)	71	
Platform (w x d) mm	300 x 330	
	100ml x 16	
	250ml x 9	
	500ml x 5	
Capacity	1000ml x 4	
	2000ml x 1	
	Optional parameters	Peltier cooling UV sterilization
Dimensions (w x d x h) mm	1 deck	400 x 600 x 618
	2 decks	400 x 600 x 1236
Weight of each floor without cooling / with peltier cooling	66kg/75kg	



UV sterilization (Optional)

The UV unit is placed on the chamber ceiling and beside the circulation fan. The UV light cannot reach sample and sterilization is operated during culturing.

Accessories

Stainless steel erlenmeyer flask clamp

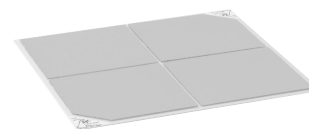
For fixing of shaken items, there is an extensive range of retaining clamp: Standard stainless steel clamps for flasks of 50 to 5000ml.



Order No.	Description	Order No.	Description
B6103550	50ml	B6103555	2000ml
B6103551	100ml	B6103560	3000ml
B6103552	250ml		
B6103553	500ml		
B6103554	1000ml		

Adhesive tray

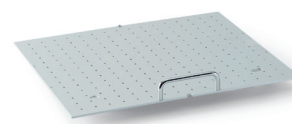
Sticky Plate can be loaded with any kind of vessels with a smooth base. Even at a speed of up to 250 rpm the vessel sticks to the plate.



Order No.	Description
B0500002	Adhesive tray, 300 x 330 mm
B6100113	Adherent layer, 200 x 200mm

Universal tray

The Universal tray employ a drilled grid for individual loadings of test tube holders, microplate, and deep well plates.



Order No.	Description
B0500001	Universal tray, 300 x 330 mm

Multi-Purpose tray

Order No.	Description
B0500010	The multi-purpose tray is made of stainless steel and can be used for a diverse range of unusual specifications.

Stainless steel clamps for fernbach flask

Order No.	Description	Order No.	Description
B6103547	1.8L	B6103557	2.8L

Test tube rack

A range of tube racks are available for various diameters and lengths. For the best axial mixing at the optimum angle, the support rack can be tilted. By loosening both fixing screws, the rack can be simply detached from the holding frame connected to the shaker.

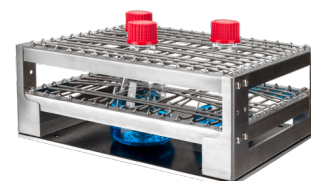


Test tube rack for long type

Order No.	Description	Order No.	Description
B6101342	144 x Ø8mm	B6101352	64 x Ø14mm
B6101343	100 x Ø10mm	B6101354	36 x Ø16mm
B6101347	72 x Ø12mm		

Rack for plastic test tube

Order No.	Description
B6101362	16x Ø30mm (50 mL centrifuge tubes)



Microbial culture version

VIB EZ B7 Incubation Shaker

The VIB EZ B7 offers a clear concept that addresses the challenges of limited and costly laboratory space. It excels in providing flexibility, user-friendly operation, and operational safety while optimizing space utilization. Its modular design and downwards-opening door allow it to function as a standalone unit on or under the laboratory bench or as part of a stacked system.

Furthermore, the system can be easily expanded in the future to a two or three deck configuration, ensuring adaptability to changing needs.

With the VIB EZ B7, you can achieve various tasks requiring optimum shaking motion and incubation conditions for different applications:

- > Vigorous shaking for bacteria, yeast or fungi.
- > Gentle and smooth action for Insect cell culture.
- > Appropriate for uses in molecular biology such as protein expression.

Multiple temperature control methods.

BIOSTREAM offers three types of shakers to meet various laboratory environmental needs.

Without Cooling unit

- > Generally, the optimal temperature for mammalian cell culture is 37 °C . Since laboratory ambient temperatures typically do not exceed 30°C a shaker without cooling unit is sufficient to meet experimental requirements

With Peltier Cooling unit

- > Solid-state cooling with no moving parts such as compressors, offering quiet, vibration-free operation and high-precision temperature control
- > Compact in size for high product integration
- > Environmentally friendly, utilizing no chemical refrigerants

With Compressor Cooling unit

- > High cooling efficiency, capable of reaching lower experimental temperatures compared to Peltier cooling
- > Utilizes R290, an environmentally friendly refrigerant, making it a green and sustainable solution
- > Features stable performance and a long operational lifespan

The drop-down door

The drop-down door is cleverly designed to serve as a shelf for the pull-out tray, adding an extra practical element. There is no additional space required compared to a door that is split and opens from the side.



Communication

The shaker are equipped with RS232 and RS485 interface.

UV sterilization (Optional)

The UV unit is placed on the chamber ceiling and beside the circulation fan. The UV light cannot reach sample and sterilization is operated during culturing.

LED illumination (Optional)

Primarily used for tissue cell culture, seed germination, seedling cultivation, and microbial culture, with adjustable light intensity in step increments (10% per step).



Specifications

Model	VIB EZ B7	
Temperature	Range	RT+7°C - 60°C (without cooling unit, at RT25°C) RT-5°C - 60°C (with peltier cooling, at RT25°C) RT-15°C - 60°C (with compressor cooling, at RT25°C)
	Control accuracy	±0.2°C
	Uniformity	±0.5°C (at 37°C /RT25°C)
	Timer	1min-99h59min
Shaking	Program control	9-segment program control can be set
	Speed	20-400rpm
	Control accuracy	± 1% FS
Chamber Volume	Shaking diameter	25 or 50 mm
	Platform (w x d)	264L
Max Capacity (with adhesive tray)		850 x 470 mm
		50ml x131
		100ml x 91
		250ml x 48
		500ml x 31
		1000ml x 19
Dimensions (w x d x h)		2000ml x 13
	1 deck	5000ml x 6
	2 decks	1075 x 850 x 550 (no base)
Weight per deck without cooling/with compressor cooling	3 decks	1075 x 850 x 1100(no base)
		1075 x 850 x 1795(with 13cm base)
		180kg/210kg

Accessories

Adhesive tray

Sticky Plate can be loaded with any kind of vessels with a smooth base. Even at a speed of up to 250 rpm the vessel sticks to the plate.



Order No.	Description
B0200002	Adhesive tray, 850 x 470 mm
B6100113	Adherent layer, 200 x 200mm

Universal tray

The Universal tray employ a drilled grid for individual loadings of test tube holders, microplate, and deep well plates.

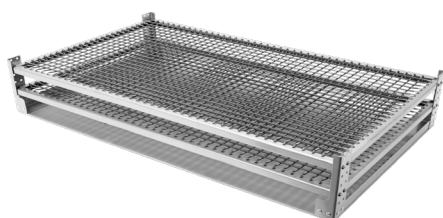


Order No.	Description
B0200001	Universal tray, 850 x 470 mm



Adjustable bar tray

Order No.	Description
B0200008	Tray with 8 fixing bars
B0200009	1 additional fixing bar for B0200008



Multi-Purpose tray

Order No.	Description
B0200010	The multi-purpose tray is made of stainless steel and can be used for a diverse range of unusual specifications.

Stainless steel erlenmeyer flask clamp

For fixing of shaken items, there is an extensive range of retaining clamp: Standard stainless steel clamps for flasks of 50 to 5000ml



Order No.	Description	Order No.	Description
B6103550	50ml	B6103555	2000ml
B6103551	100ml	B6103560	3000ml
B6103552	250ml	B6103558	4000ml
B6103553	500ml	B6103561	5000ml
B6103554	1000ml		

Stainless steel clamps for fernbach flask

Order No.	Description	Order No.	Description
B6103547	1.8L	B6103557	2.8L

Test tube rack

A range of tube racks are available for various diameters and lengths. For the best axial mixing at the optimum angle, the support rack can be tilted. By loosening both fixing screws, the rack can be simply detached from the holding frame connected to the shaker.



Test tube rack for long type

Order No.	Description	Order No.	Description
B6101342	144 x Ø8mm	B6101352	64 x Ø14mm
B6101343	100 x Ø10mm	B6101354	36 x Ø16mm
B6101347	72 x Ø12mm		

Rack for plastic test tube

Order No.	Description
B6101362	16x Ø30mm (50 mL centrifuge tubes)

VIB EZ B5 Incubation Shaker

The VIB EZ B5 Shaker is designed to optimize laboratory space efficiently, offering flexibility, user-friendly operation, and enhanced safety. Its modular structure and side-sliding door allow the incubator to be used either on or under the lab bench, as well as in a space-saving double-stacked configuration.

Applications

All laboratory applications require the right shaking method and optimal incubation conditions to ensure reliable results.

- > Bacterial, yeast, and fungal cultures require vigorous shaking.
- > Insect cell cultures need gentle and stable agitation.
- > Suitable for molecular biology applications, such as protein expression.
- > Precise temperature control and optional lighting make it ideal for algal cultivation and other light-sensitive processes.

The VIB EZ B5 features an LED display and a membrane keypad, designed for easy operation even when wearing gloves.

Multiple temperature control methods

BIOSTREAM offers three types of shakers to meet various laboratory environmental needs.

Without Cooling unit

- > Generally, the optimal temperature for mammalian cell culture is 37°C. Since laboratory ambient temperatures typically do not exceed 30°C a shaker without cooling unit is sufficient to meet experimental requirements

With Peltier Cooling unit

- > Solid-state cooling with no moving parts such as compressors, offering quiet, vibration-free operation and high-precision temperature control
- > Compact in size for high product integration
- > Environmentally friendly, utilizing no chemical refrigerants

With Compressor Cooling unit

- > High cooling efficiency, capable of reaching lower experimental temperatures compared to Peltier cooling
- > Utilizes R290, an environmentally friendly refrigerant, making it a green and sustainable solution
- > Features stable performance and a long operational lifespan

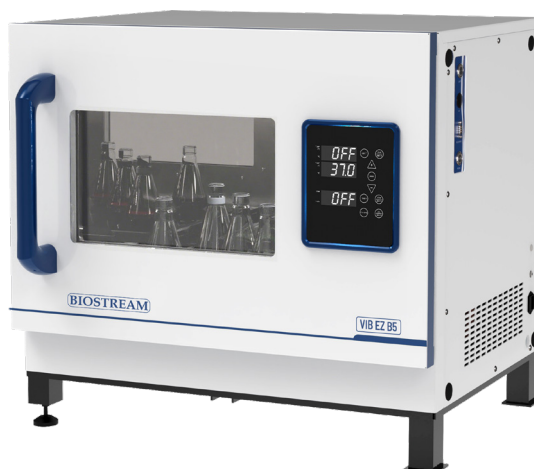


UV sterilization (Optional)

The UV unit is placed on the chamber ceiling and beside the circulation fan. The UV light cannot reach sample and sterilization is operated during culturing.

LED illumination (Optional)

Primarily used for tissue cell culture, seed germination, seedling cultivation, and microbial culture, with adjustable light intensity in step increments (10% per step).



Specifications

Model	VIB EZ B5	
Display	LED	
Temperature	Range	RT+7°C -60°C (without cooling unit, at RT25°C) RT-5°C - 60°C (with peltier cooling, at RT25°C) RT-15°C - 60°C (with compressor cooling, at RT25°C)
	Accuracy	±0.1°C
	Uniformity	±0.5°C (at 37°C / RT.25°C)
	Timer Program control	9-segment program control can be set Timer:1min-99h59min
Shaking	Speed	30-400rpm
	Control accuracy	± 1%FS
	Shaking diameter	25/50 mm
Chamber Volume	162L	
Platform (w x d)	450 x 450 mm	
Max Capacity (with adhesive tray)	50ml x 64	
	100ml x 44	
	250ml x 25	
	500ml x 16	
	1000ml x 9	
	2000ml x 6 3000ml x 4	
Optional parameters	Cooling	
	illumination	
	UV sterilization	
Dimensions (w x d x h)	1 deck	800 x 695 x 635
	2 decks	800 x 695 x 1270
Weight per deck with/without cooling	Approx. 140kg/170kg	

Accessories

Adhesive tray

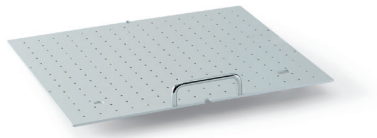
Sticky Plate can be loaded with any kind of vessels with a smooth base. Even at a speed of up to 250 rpm the vessel sticks to the plate.



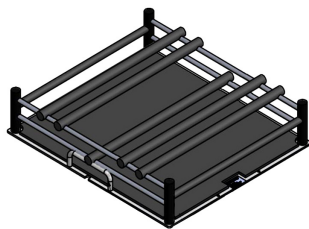
Order No.	Description
B0300002	Adhesive tray, 450 x 450 mm
B0300004	Double tray with adherent layer, Layer spacing 165mm
B6100113	Adherent layer, 200 x 200mm

Universal tray

The Universal tray employ a drilled grid for individual loadings of test tube holders, microplate, and deep well plates.



Order No.	Description
B0300001	Universal tray, 450 x 450 mm



Adjustable bar tray

Order No.	Description
B0300008	Tray with 8 fixing bars
B0300009	1 additional fixing bar for B0300008



Multi-Purpose tray

Order No.	Description
B0300010	The multi-purpose tray is made of stainless steel and can be used for a diverse range of unusual specifications.

Stainless steel erlenmeyer flask clamp

For fixing of shaken items, there is an extensive range of retaining clamp. Standard stainless steel clamps for flasks of 50 to 5000ml



Order No.	Description	Order No.	Description
B6103550	50ml	B6103555	2000ml
B6103551	100ml	B6103560	3000ml
B6103552	250ml	B6103558	4000ml
B6103553	500ml	B6103561	5000ml
B6103554	1000ml		

Stainless steel clamps for fernbach flask

Order No.	Description	Order No.	Description
B6103547	1.8L	B6130557	2.8L

Test tube rack

A range of tube racks are available for various diameters and lengths. For the best axial mixing at the optimum angle, the support rack can be tilted. By loosening both fixing screws, the rack can be simply detached from the holding frame connected to the shaker.



Test tube rack for long type

Order No.	Description	Order No.	Description
B6101342	144 x Ø8mm	B6101352	64 x Ø14mm
B6101343	100 x Ø10mm	B6101354	36 x Ø16mm
B6101347	72 x Ø12mm		

Rack for plastic test tube

Order No.	Description
B6101362	16x Ø30mm (50 mL centrifuge tubes)

VIB EZ B3 Incubation Shaker

The shaker may be operated as a stand-alone device on a laboratory bench or assembled into a double-stack configuration. It is extensively used for microbial cultivation, suspension-cell culture, and molecular-biology assays.

Features

- > Easy to completed the stacking process.
- > With electromagnetic drive technology, shaking stable and low noise.
- > Integrated shaking unit, the volume of flask up to 2L.
- > Opening direction of the out door can be switched option.
- > Built-in circulation fan to ensure the uniformity of temperature field.
- > Stainless steel chamber, easy to clean.
- > Alarm for temperature deviation, speed deviation or open the door.
- > Independent safety temperature control to prevent overheating.
- > Peltier cooling enables a compact, efficient, and silent design without refrigerants.

UV sterilization (Optional)

The UV unit is placed on the chamber ceiling and beside the circulation fan. The UV light cannot reach sample and sterilization is operated during culturing.

Multiple temperature control methods.

BIOSTREAM offers two types of shakers to meet various laboratory environmental needs.

Without Cooling unit

- > Generally, the optimal temperature for mammalian cell culture is 37°C . Since laboratory ambient temperatures typically do not exceed 30°C a shaker without cooling unit is sufficient to meet experimental requirements

With Peltier Cooling unit

- > Solid-state cooling with no moving parts such as compressors, offering quiet, vibration-free operation and high-precision temperature control
- > Compact in size for high product integration
- > Environmentally friendly, utilizing no chemical refrigerants

Specifications

Model	VIB EZ B3		
Temperature	Range	RT+7°C - 60°C (without cooling unit, at RT25°C) RT-10°C - 60°C (with peltier cooling, at RT25°C)	
	Control accuracy (°C)	±0.1	
	Uniformity (°C)	±0.2 (at 37°C /RT25°C)	
Shaking	Timer function	Temperature: without timer function; Shaking speed timer range: Continuous or up to 99 hours 59 min	
	Speed (rpm)	30-300	
	Control accuracy	± 1%FS	
Chamber Volume (L)	Shaking diameter (mm)	25 or 50mm	
	Platform (w x d) mm	300 x 330	
	Capacity		100ml x 16
			250ml x 9
			500ml x 5
		1000ml x 4	
Optional parameters		2000ml x 1	
		Peltier cooling	
Dimensions (w x d x h) mm		UV sterilization	
	1 deck	400 x 600 x 618	
Weight of each floor without cooling / with peltier cooling	2 decks	400 x 600 x 1236	
		66kg/75kg	



UV sterilization (Optional)

The UV unit is placed on the chamber ceiling and beside the circulation fan. The UV light cannot reach sample and sterilization is operated during culturing.

Accessories

Stainless steel erlenmeyer flask clamp

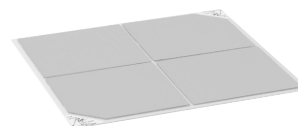
For fixing of shaken items, there is an extensive range of retaining clamp: Standard stainless steel clamps for flasks of 50 to 5000ml.



Order No.	Description	Order No.	Description
B6103550	50ml	B6103555	2000ml
B6103551	100ml	B6103560	3000ml
B6103552	250ml		
B6103553	500ml		
B6103554	1000ml		

Adhesive tray

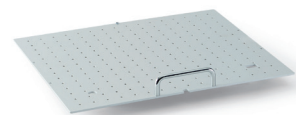
Sticky Plate can be loaded with any kind of vessels with a smooth base. Even at a speed of up to 250 rpm the vessel sticks to the plate.



Order No.	Description
B0500002	Adhesive tray, 300 x 330 mm
B6100113	Adherent layer, 200 x 200mm

Universal tray

The Universal tray employ a drilled grid for individual loadings of test tube holders, microplate, and deep well plates.



Order No.	Description
B0500001	Universal tray, 300 x 330 mm

Multi-Purpose tray

Order No.	Description
B0500010	The multi-purpose tray is made of stainless steel and can be used for a diverse range of unusual specifications.



Stainless steel clamps for fernbach flask

Order No.	Description	Order No.	Description
B6103547	1.8L	B6103557	2.8L

Test tube rack

A range of tube racks are available for various diameters and lengths. For the best axial mixing at the optimum angle, the support rack can be tilted. By loosening both fixing screws, the rack can be simply detached from the holding frame connected to the shaker.



Test tube rack for long type

Order No.	Description	Order No.	Description
B6101342	144 x Ø8mm	B6101352	64 x Ø14mm
B6101343	100 x Ø10mm	B6101354	36 x Ø16mm
B6101347	72 x Ø12mm		

Rack for plastic test tube

Order No.	Description
B6101362	16x Ø30mm (50 mL centrifuge tubes)

Incubator

CO₂ incubator

RT +5-60 °C / 40 -180 - 260 - 650 - 850 - 1200 L

Peltier-cooled CO₂ incubator

20-60 °C / 40 - 180 - 260 - 650 - 850 L

Tri-gas incubator [N₂ / O₂ / CO₂]

RT +5-60 °C / 40 - 180 - 850 L

Constant temperature Incubator

RT +5-60 °C / 50 - 100 - 150 - 260 L

Large-scale Constant Temperature Incubator

RT +7-60 °C / 1200 L

Peltier-cooled incubator

+4-6.0 °C / 15 - 50 L

+10-60 °C / 100 - 150 L

Cell Culture Roller Rack

Shaker for CO₂ Incubator



CO₂ Incubator

The incubator is ideal for the experiments of the cultivation of animal cells, sperm/ovum, anaerobic cells, all sorts of microbe cells, hatching/germinating and special tissues.

Features

Fast Heat-Up, Fast-Recovery, Stable Control

7-inch Touchscreen

Displays CO₂ concentration and temperature data in real time. USB flash drive allows for the storage of historical data information.

6 Sides Direct Heating System

Electric heating wire is covered on all sides of the chamber which makes stable uniformity and provides fast heat-up & temperature recovery. 3 parts of heating section are controlled and calibrated individually by 3 temperature sensors.

Dry Wall and Air Jacket

Warm air from heating wire is preserved in space between the chamber and the insulation layer. It helps temperature recover faster and minimize heat loss. Dry wall with insulation requires no regular maintenance.

DUAL BEAM IR CO₂ Sensor

Fast & precise detection for CO₂ gas regardless of temperature and humidity.

Natural Humidification Using Water Tray

The heater on bottom side warms the water in tray and it makes humidification. The circulation fan delivers the moisture formed from the water in the entire chamber.



Specifications

Temp. Range:	RT +5~60°C
Temp. Resolution:	0.1°C
Dry Heat:	Up to 125°C
Temp. Control:	Digital PID
CO ₂ Range:	0.1% ~ 20%
CO ₂ Accuracy:	±0.1% (5% / 37°C)
CO ₂ Resolution:	0.1%
CO ₂ Sensor:	IR CO ₂ Sensor
Display:	TFT Touchscreen
IP code:	IP20
Operating panel:	Touchscreen Control Panel
Jacket type:	Air Jacket Type (6 sides heat)
Chamber material:	Stainless Steel (304)

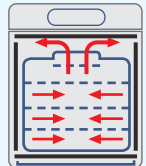
Model	BCI-40	BCI-180
Order No. Standard	B6X11040	B6X11180
Sterilization	B6X12040	B6X12180
Chamber volume (L)	40	120
Temperature Stability (°C)	±0.1 (37°C)	±0.1 (37°C)
Temp. Uniformity (°C)	±0.3 (at 37°C / RT20°C)	±0.3 (at 37°C / RT20°C)
Heating Capacity (W)	320	320
CO ₂ Inlet pressure range (bar)	0.3~0.5	0.3~0.5
Number of shelves (included / max.)	2/4	3/8
Chamber dimension (WxDxH)mm	320x350x375	480x470x520
Overall dimension (WxDxH)mm	420x460x570	580x560x765
Weight (kg)	38	80

Standard package includes: incubator, shelves, water tray.



Alarm System

Buzzer to alarm low or high deviation of CO₂, Temperature.



Gentle Air and Moisture Convection

Natural Air and Moisture Convection, Air and Moisture in chamber are distributed gently by 6-side heating and air circulation fan.



Easy to clean

Rounded corner allows easy cleaning. The entire chamber is made of stainless steel (SUS304).



Over Heating Limit

Heating is automatically cut by safety device when temperature control fails or there is excessive heating over set point.



Perforated Shelves

Perforated shelves are good for natural air flows and are made of stainless steel which is resistant to rust and contamination.



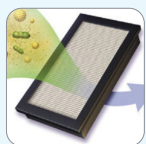
No Condensation

Heating by front door heater & frame heater prevents condensation in the chamber and on the glass door.



Microprocessor PID Control

Intelligence Control for CO₂ density, Temperature, Alarm, Automatic Decontamination (Optional).



HEPA filtration of the chamber

Options

Customize your incubator with these options.



Access port

30mm Access Port is available at left side. (Upon ordering and additional charge).



UV sterilization

4W UV is placed on the chamber ceiling and beside the circulation fan. The UV light cannot reach sample and sterilization is operated during culturing.



Maximum 125°C dry hot air sterilization. No need to remove IR CO₂ sensor.



Monitoring System

Connection port has been designed to observe the status of equipments in real time even in the far distance.



Reduce gas consumption and heat loss, enabling faster recovery—ideal for various samples.

5 Split Door for BCI-40.

6 Split Door for BCI-180.



Power socket in chamber

Three-jack socket, 220V, for power supply inside the chamber, not exceed 1000W

Model		BCI-260	BCI-650	BCI-850	BCI-1200
Order No.	Standard	B6X11260	B6X11650	B6X11850	B6011122*
	Sterilization	B6X12260	B6X12650	B6X12850	-
Chamber volume (L)		260	650	850	1200
Temperature Stability (°C)		±0.1 (37°C)	±0.1 (37°C)	±0.1 (37°C)	±0.1 (37°C)
Temp. Uniformity (°C)		±0.4 (37°C / RT20°C)	±0.5 (37°C / RT20°C)	±0.5 (37°C / RT20°C)	±0.5 ~0.7 (37°C / RT20°C)
Heating Capacity (W)		610	1100	1400	1600
CO ₂ Inlet pressure range (bar)		0.6~0.7	0.7~1.0	0.7~1.0	0.7~1.0
Number of shelves (included / max.)		3/8	3/15	3/15	0/15
Chamber dimension (WxDxH) mm		590x530x900	700x650x1430	700x800x1530	868x720x1927
Overall dimension (WxDxH) mm		630x680x1125	820x780x1740	820x930x1840	990x855x2123
Weight (kg)		115	230	260	323

Standard package includes: incubator, shelves, water tray.

* BCI- 1200 Standard package includes: incubator only, without shelves. Special designed for Roller Rack.

Peltier-cooled CO₂ Incubator

This CO₂ incubator series integrates heating and Peltier cooling systems, representing an advancement in environmentally friendly and energy-efficient temperature management technologies. These innovations ensure exceptional control accuracy with minimal fluctuations.

Specifications

Temp. Range:	+20~60 °C
Temp. Resolution:	0.1 °C
Dry Heat:	Up to 125 °C
Temp. Control:	Digital PID
CO ₂ Range:	0.1% ~ 20%
CO ₂ Accuracy:	±0.1% (5% / 37 °C)
CO ₂ Resolution:	0.1%
CO ₂ Sensor:	IR CO ₂ Sensor
Display:	TFT
IP code:	IP20
Jacket type:	Dry Wall Type (6 sides heat)
Chamber material:	Stainless Steel (304)



Model	BCI-40P	BCI-180P
Order No. Standard	B6X13040	B6X13180
Sterilization	B6X14040	B6X14180
Chamber volume (L)	40	180
Temperature Stability (°C)	±0.1 (37°C)	±0.1 (37°C)
Temp. Uniformity (°C)	±0.3(37°C / RT20°C)	±0.3(37°C / RT20°C)
Heating Capacity (W)	320	320
CO ₂ Inlet pressure range (bar)	0.3~0.5	0.3~0.5
Number of shelves (included / max.)	2/4	3/8
Chamber dimension (WxDxH) mm	320x350x375	528x473x710
Overall dimension (WxDxH) mm	420x520x570	560x680x945
Weight (kg)	42	85

Model	BCI-260P	BCI-650P	BCI-850P
Order No. Standard	B6X13260	B6X13650	B6X13850
Chamber volume (L)	260	650	850
Temperature Stability (°C)	±0.1 (37°C)	±0.1 (37°C)	±0.1 (37°C)
Temp. Uniformity (°C)	±0.4 (37°C / RT20°C)	±0.5 (37°C / RT20°C)	±0.5 (37°C / RT20°C)
Heating Capacity (W)	610	1100	1400
CO ₂ Inlet pressure range (bar)	0.6~0.7	0.7~1.0	0.7~1.0
Number of shelves (included / max.)	3/8	3/15	3/15
Chamber dimension (WxDxH) mm	590x530x900	700x650x1430	700x800x1530
Overall dimension (WxDxH) mm	630x760x1125	820x860x1740	820x930x1840
Weight (kg)	119	235	296

Standard package includes: incubator, shelves, water tray.

Tri-Gas Incubator (CO₂ / O₂ / N₂)

The Tri-Gas incubator is ideal for the experiments of the cultivation of animal cells, sperm/ovum, anaerobic cells, all sorts of microbe cells, hatching/germinating and special tissues.



Options

Customize your incubator with these options.



Access port

25mm Access Port is available at left side. (Upon ordering and additional charge).



UV sterilization

4W UV is placed on the chamber ceiling and beside the circulation fan. The UV light cannot reach the sample and sterilization is operated during culturing.



Hot air sterilization

Maximum 125°C Dry Hot Air in BCI-40T, BCI-180T No need to remove IR CO₂ sensor.



Monitoring System

Connection port has been designed to observe the status of equipments in real time even in the far distance.



Lower gas consumption.

Lower heat loss.

Faster recovery easy classification for various samples.

5 Split Door for BCI-40T.

6 Split Door for BCI-180T.

Features

Fast heat-up, fast-recovery, reliable control.

6 Sides Direct Heating System

The electric heating wire is covered on all sides of the chamber which makes good uniformity and provides fast heat-up & temperature recovery.

3 parts of heating section are controlled and calibrated individually by 3 individual temperature sensors.

Dry Wall and Air Jacket

Warm air from heating wire is preserved in space between the chamber and the insulation layer. It helps temperature recover faster and minimize heat loss.

Drywall withinsulation requires no regular maintenance.

DUAL BEAM IR CO₂ Sensor

Fast & precise detection for CO₂ gas regardless of temperature and humidity.

Natural Humidification using Water Tray

The heater on bottom warms the water in tray and it makes humidification. The circulation fan delivers the moisture formed from the water to the entire chamber.

No Condensation

Heating by front door heater & frame heater prevents condensation in the chamber and on the glass door.

Microprocessor PID Control

Intelligence Control for CO₂ density, Temperature, Alarm, Automatic.

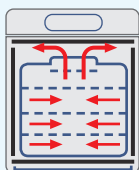
Decontamination (Optional).

HEPA filtration

A clean gas environment inside the incubator is guaranteed by integrated HEPA filtration.

Gentle Air and Moisture Convection

Gentle air and moisture convection air and moisture in the chamber are distributed naturally by 6 side heating and the air circulation fan.



Over Heating Limit

Heating is automatically cut by safety device when temperature control failed or there is excessive heating over set point.



Easy to clean

Rounded corner allows easy cleaning. The entire chamber is made of stainless steel (SUS304).



Perforated Shelves

Perforated shelves are good for natural air flows and are made of stainless steel which are resistant against rust and contamination.



Alarm System

Buzzer to alarm low or high deviation of CO₂, Temperature.

Specifications

Model	BCI-40T	BCI-180T	BCI-260T	BCI-850T
Volume [L]	40	180	260	850
Temperature	Range (°C)	Ambient+5~60	Ambient+5~60	Ambient+5~60
	Accuracy(°C)	±0.1 (37°C)	±0.1 (37°C)	±0.1 (37°C)
	Resolution (°C)	0.1	0.1	0.1
	Control	Digital PID	Digital PID	Digital PID
CO ₂	Range	0.1% ~ 20%	0.1% ~ 20%	0.1% ~ 20%
	Accuracy	±0.1% (5% / 37°C)	±0.1% (5% / 37°C)	±0.1% (5% / 37°C)
	Resolution	0.1%	0.1%	0.1%
	Sensor	IR CO ₂ Sensor	IR CO ₂ Sensor	IR CO ₂ Sensor
	Control	Microprocessor	Microprocessor	Microprocessor
	Inlet pressure range (bar)	0.5~0.6	0.6~0.7	0.6~0.7
O ₂	Range	0.6~85%	0.6~85%	0.6~85%
	Sensor	Zirconium dioxide sensor	Zirconium dioxide sensor	Zirconium dioxide sensor
Display	TFT	TFT	TFT	TFT
Operating panel	Individual 2-Channel Touch Button			
Jacket type	Dry Wall Type (six-side gradient heating design)			
Chamber material	Stainless Steel (304)			
IP code	IP20			
Number of shelves (included / max.)	2/4	3/8	3/8	3/15
Chamber dimension (mm)	320x350x375	528x473x710	530x590x900	700x800x1530
Overall dimension (mm)	420x460x570	560x620x945	630x680x1125	820x930x1840
Weight (kg)	35	78	115	266
Order No. for standard version	B6X21040	B6X21180	B6X21260	B6X21850
Order No. for dry heat sterilization version	B6X22040	B6X22180	B6X22260	B6X22850

Standard package includes: incubator, shelves, water tray.

Constant Temperature Incubator

Versatile air-jacketed incubators. Specially designed for uniform temperature distribution and minimal sample contamination caused by external air intrusion.

Features

- > Applicable in life science, pharmacy, medical science, chemistry, biology, and related fields for storage of samples which need constant temperature and incubation
- > Digital temperature display and control
- > PID controller for temperature stability and safety protection
- > Very good heating characteristics
- > Ecologically friendly
- > Easy to clean
- > Timer function
- > Can be opened anytime when necessary
- > When the temperature exceeds set levels and reaches the set safety value, an alarm activates, and the incubation process stops
- > The material of the observation window is tempered glass, which has good safety and sealing characteristics
- > The magnetic door and high-quality gasket can absorb external shocks and comprise excellent sealing characteristics
- > Easy-to-clean stainless steel shelves with good air permeability and adjustable height
- > Upon opening the incubator, the fan and heating device stop operation
- > Alarm starts for sample protection when the door is open for more than 60 seconds



Specifications

Model	BH-05	BH-10	BH-15	BH-25
Order No.	B6X31050	B6X31100	B6X31150	B6X31250
Volume [L]	50	100	150	260
Temperature Range (°C)	RT + 5-65	RT + 5-65	RT + 5-65	RT + 5-65
Temperature uniformity of working area (°C)	<±0.2 (37°C / RT20°C)	<±0.2 (37°C / RT20°C)	<±0.2 (37°C / RT20°C)	<±0.2 (37°C / RT20°C)
Temperature Stability(°C)	±0.1 (37°C)	±0.1 (37°C)	±0.1 (37°C)	±0.1 (37°C)
Temperature Controller	Digital Display with PID automatic regulation, Button Control			
Timer	1 min ~ 99 hr 59 min	1 min ~ 99 hr 59 min	1 min ~ 99 hr 59 min	1 min ~ 99 hr 59 min
Safety	Independent safety temperature protection, Open door alarm function			
Heating Capacity (W)	340	340	340	610
Shelves (included / max.)	2/3	2/4	2/8	3/8
Inner Dimensions (WxDxH)mm	345 x 368 x 375	480 x 480 x 495	500 x 480 x 620	530 x 590 x 900
Outer Dimensions (WxDxH) mm	440 x 480 x 610	560 x 560 x 760	560 x 580 x 880	630 x 680 x 1125
IP code	IP20	IP20	IP20	IP20
Weight (kg)	35	50	65	115
Power supply	AC 220~240 V,50/60 Hz			
Number of internal power outlets	-	-	-	-

Standard package includes: incubator, shelves.

Large-scale Constant Temperature Incubator

Large-scale constant temperature incubators are specially designed for Roller Rack. The specially designed heating system and high-efficiency circulation fan work in concert to ensure a uniform cultivation environment, delivering excellent temperature uniformity throughout the chamber.



Model	BH-1200
Order No.	B6X31122
Chamber volume (L)	1204
Accuracy(°C)	±0.5 ~0.7 (37°C / RT20°C)
Temperature Stability (°C)	±0.1 (37°C)
Materials	Interior: Stainless steel ; Shelves: Polished stainless steel ; Inner glass door: 5 mm high temperature resistant safety glass ; Casing: Steel plate, Spray coating
Heating Capacity(W)	1600
Shelves (included / max.)	0/15



Peltier-cooled Incubator

This series of incubators combines heating and peltier cooling systems, a perfect development from environmentally friendly and energy efficient heating and cooling technologies that facilitate excellent control accuracy and minimal fluctuations.

Features

- > Applicable in life science, pharmacy, medical science, chemistry, biology, and related fields for storage of samples which need a constant temperature and for incubation.
- > Heating function start and duration can be pre-set.
- > There are four temperature programs available for editing, and each program can be edited in 5 steps.
- > Four temperature can be preset for quick changeover.
- > Temperature measure unit can be set as either °C or °F.
- > When the temperature exceeds set levels and reaches the set safety value, an alarm activates, power is cut off, and the incubation process stops.
- > With tempered glass window, the examination of samples is easy and convenient, avoiding unnecessary disruptions of the incubation process.
- > The stainless steel shelves have a good air permeability, are easy to clean and can be adjusted in height.
- > When temperature deviation occurs, the BIAS function sets in, which makes operation convenient.
- > In the case of an unexpected power breakdown the incubator offers two working options: automatic re-operation and automatic stop.
- > When opening the incubator, the fan and heating device stop operation. After one minute without closing the door an alarm sets in.
- > Incubators use heat transfer method for circulation. In a separated room outside the work space it uses heat exchange, In the working space it uses natural convection and forced circulation.
- > The circulation method will not induce air pollution and can guarantee exact temperature distribution.



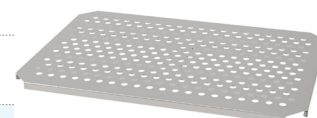
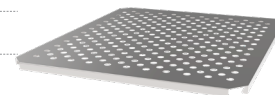
Specifications

Model	BH-01P	BH-05P	BH-10P	BH-15P
Order No.	B6053015	B6053050	B6053100	B6053150
Temperature Control Method	Forced circulation			
Volume (L)	15	50	100	150
Temperature Range (°C)	+4 ~ 60 (at 20°C RT)	+4 ~ 60 (at 20°C RT)	+10 ~ 60 (at 20°C RT)	+10 ~ 60 (at 20°C RT)
Temperature Stability (°C)	±0.1	±0.1	±0.1	±0.1
Temperature Controller	Touch Control; Digital Display with PID automatic regulation			
Timer	1 min ~ 999hr 59 min / continuous			
Heating Capacity (W)	150	300	450	450
Max. Cooling Capacity (W)	350	350	350	350
Shelves (included / max.)	2/4	2/6	2/8	2/10
Inner Dimensions (W×D×H)mm	315 x 200 x 240	335 x 370 x 380	480 x 478.5 x 500	480 x 500 x 625
Outer Dimensions (W×D×H) mm	400x 409.5 x 445	440 x 550 x 618	620 x 668.5 x 806	620 x 690 x 930
IP code	IP20	IP20	IP20	IP20
Weight(kg)	24	35	65	80
Power supply	AC 220 ~ 240V, 50/60 Hz			

Standard package includes: incubator, shelves.

Incubator Accessories

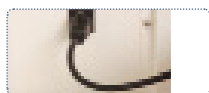
Order No.	Item	Description	Suitable for
Incubator shelf for holding cultures in the chamber			
B6030501	Perforated Shelf kit		BH-05
B6031001	Perforated Shelf kit		BH-10
B6031501	Perforated Shelf kit		BH-15
B6032501	Perforated Shelf kit	Perforated shelf to improve uniformity, Stainless steel material can effectively resist corrosion and pollution, load 15kg	BH-25
B6053016	Perforated Shelf kit		BH-01P
B6053501	Perforated Shelf kit		BH-05P
B6053101	Perforated Shelf kit		BH-10P
B6053151	Perforated Shelf kit		BH-15P
B6031221	Perforated Shelf kit	Perforated shelf to improve uniformity, Stainless steel material can effectively resist corrosion and pollution, load 25kg	BH-1200
B6031222	Perforated Shelf kit	Perforated shelf to improve uniformity, Stainless steel material can effectively resist corrosion and pollution, load 50kg	BH-1200
Roller base:Placed at the bottom of the incubator for support and easy movement			
B6010402	Roller base	To move incubator easily	BH-05
B6031002	Roller base	To move incubator easily	BH-10
B6031502	Roller base	To move incubator easily	BH-15
Stacking kit:to stack and fix the incubator			
B6031003	Stacking kit	To stack and fix the incubator	BH-10
B6031503	Stacking kit	To stack and fix the incubator	BH-15
B6011806	UV lamp	A 4W UV lamp is placed at the top of the chamber, next to the circulating fan. UV rays do not radiate the sample and can be sterilized during culture.	All series incubator (Except dry heat sterilization incubators)
B6011816	Holes for auxiliary monitoring	Diameter of 30mm (40mm customizable), for sampling, experimental verification and penetration of additional equipment power or signal cables in the incubator	All series incubator
B6011809	Monitoring system	PC software, using Internet network connection, can monitor the working status of the incubator in real time remotely	All series incubator
B6011809-1	Connecting wire	With anti-shedding interface for PC to the incubator, unit/m	All series incubator
B6051502	Power socket in chamber	Three-jack socket, 220V, for power supply inside the chamber, not exceed 1000W	All series incubator
B6051503	LED lamp	Installed on the top of the chamber, with an independent lighting switch	All series incubator (Except dry heat sterilization incubators)



Roller base



Stacking kit



Cell Culture Roller Rack

The Biostream cell culture roller rack, available in the Bio Roller Mini and Bio Roller Mid models, offers high flexibility in its operation, both inside an incubator and on a work table. A remote control box can be conveniently attached to the incubator's surface, and the flat cable does not require special installation measures like an access port. The Bio Roller Mini can accommodate up to four 2000ml bottles, while the Bio Roller Mid can handle six 2000ml bottles at a time. With a speed range from 0.2rpm to 8.1 rpm, these racks are designed to optimize the performance of adherent cell cultures.

Features

- > Steel reinforced polyurethane timing belts .
- > Brushless DC Motor.
- > Powder coated aluminum for durability and cleanliness.
- > Non-slip rubber material for the best performance of rolling.
- > Designed for no idle roller by drive-belt.



Specifications

Model	Bio Roller Mini	Bio Roller Mid
rpm Range (rpm)	0.2~8.1	0.2~8.1
Accuracy (rpm)	1	1
Increment (rpm)	0.1	0.1
Control	Microprocessor digital PID	Microprocessor digital PID
Time Range	Continuous or up to 999h 59min	Continuous or up to 999h 59min
Accuracy	±1%	±1%
Display	LED Display	LED Display
Motor type	Brushless DC motor	Brushless DC motor
Bottle diameter [mm]	110 to 120 4ea	110 to 120 6ea
Roller deck dimension (WxDxH)mm	362×299×212	362×299×412
Overall dimension (WxDxH)mm	375×370×345	375×370×545
Bottle Positions	4	6
Decks	2	3
Power	220V, 50/60Hz	220V, 50/60Hz
Weight (kg)	12.5	13.5
Order No.	B6110100	B6110200

*110V product available upon request.



Can contain four Dia.110-120mm roller bottles.

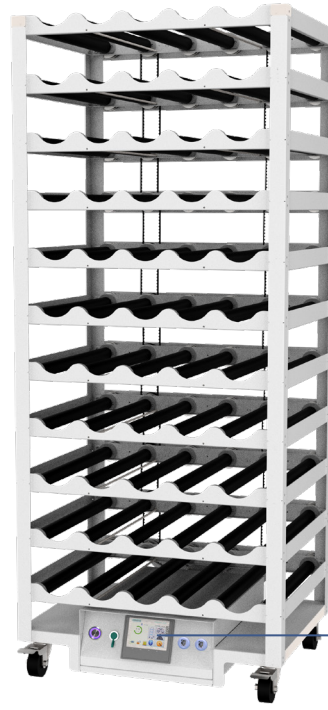
Outside control

Controller can adjust speed without opening the door.

Cell Culture Roller Rack



Oversized CO₂ incubator optional



Bio Roller Pro

- > Smooth ramping digitally controlled rotation accurate to 0.01 rpm.
- > Maintenance-free precision brushless motor.
- > Bright TFT display for easy operation.
- > Can be directly connected to the printer.

Specifications

Model	Bio Roller Pro
Display	LCD
Capacity	5-55 Positions
Bottle Speed (110mm Bottle) (rpm)	0.08-2.5
Diameter of roller bottles (mm)	108-121
Length of roller bottles (mm)	Max. 550
Accuracy (rpm)	0.01
Drive	Belt Driven
Motor Type	Brushless DC
Rotation Direction	Clockwise and Counter-Clockwise
Options	Temperature Alarm and Battery Backup
Remote Communication	RS232
Humidity	80% up to 37°C
Operating Temperature (°C)	10 to 40
Electrical	100-240VAC, 50/60 Hz

Standard package includes: Roller, Belt break alarm.

Bio Roller Elite

- > Robust touch screen interface that is easy to view from a distance.
- > Readily recognizable icons for intuitive navigation.
- > Digitally controlled maintenance-free motor accurate to 0.01 rpm.
- > RS-422 Modbus RTU, RS-485 Modbus RTU, Modbus TCP and TCP/IP.
- > Can be directly connected to the printer.

Specifications

Model	Bio Roller Elite
Display	SIMATIC HMI Touch Screen
Capacity	8-88 Positions 5-55 Positions
Bottle Speed (110mm Bottle) (rpm)	0.08-2.5
Diameter of roller bottles (mm)	108-121
Length of roller bottles (mm)	Max. 550
Accuracy (rpm)	0.01
Drive	Belt Driven
Motor Type	Brushless DC
Rotation Direction	Clockwise and Counter-Clockwise
Options	Temperature Alarm and Battery Backup
Remote Communication	RS-422 Modbus RTU, RS-485 Modbus RTU, Modbus TCP and TCP/IP
Humidity	80% up to 37°C
Operating Temperature (°C)	10 to 40
Electrical	100-240VAC, 50/60 Hz

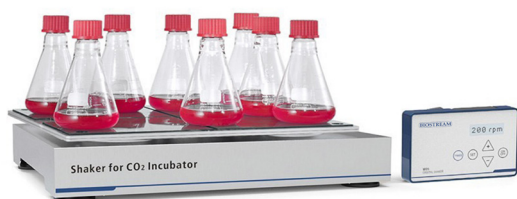
Standard package includes: Roller, Belt break alarm.

Ordering Information

Order No.	Position	Deck distance	Decks	Bidth	Depth	Height	Bottle Positions	Rack material
Bio Roller Pro		cm		cm	cm	cm		
BPBBRA501	5	18	1	79	63	35	5	AL
BPBBRA503	5	18	3	79	63	71	15	AL
BPBBRA505	5	18	5	79	63	107	25	AL
BPBBRA508	5	18	8	79	63	161	40	AL
BPBBRA509	5	18	9	79	63	179	45	AL
BPBNRS501	5	15	1	79	63	35	5	SS304
BPBNRS503	5	15	3	79	63	65	15	SS304
BPBNRS505	5	15	5	79	63	95	25	SS304
BPBNRS508	5	15	8	79	63	140	40	SS304
BPBNRS509	5	15	9	79	63	155	45	SS304
BPBNRS510	5	15	10	79	63	170	50	SS304
BPBNRS511	5	15	11	79	63	185	55	SS304
Bio Roller Elite								
BEBNRS501	5	15	1	79	63	5	5	SS304
BEBNRS503	5	15	3	79	63	65	15	SS304
BEBNRS505	5	15	5	79	63	95	25	SS304
BEBNRS508	5	15	8	79	63	140	40	SS304
BEBNRS509	5	15	9	79	63	155	45	SS304
BEBNRS510	5	15	10	79	63	170	50	SS304
BEBNRS511	5	15	11	79	63	185	55	SS304
BEBNRS809	8	15	9	120	63	155	72	SS304
BEBNRS810	8	15	10	120	63	170	80	SS304
BEBNRS811	8	15	11	120	63	185	88	SS304

Shaker for CO₂ Incubator

This is Compact Shaker with benefits such as small foot print and easy to move. The non-belt magnetic drive provides low noise, low vibration. Despite compact size, shaking is powerful and the workplace is large to load various vessels.



Specification

Model	Bio Shaker
Motion	Orbital
Control	Microprocessor Digital
Motor	Plate BLDC motor
Drive System	Magnetic Drive
Display	LED display
Speed Range(rpm)	20 ~ 200
Accuracy(rpm)	±1
Shaking Throw(mm)	25 or 50mm
Time Range	Continuous or up to 99 hours 59min
Time Increment	1min
Shaker size(W xDx H) mm	447x 378x 82
Weight(Kg)	13.5
Platform Size(W x D)mm	400x330
IP code	IP54
Control box Size(W x Lx H)mm	155 x 95 x 25
Power	100/230 V (± 10 %) 50/60HZ
Load Capacity	100ml x 25
	250ml x 14
	500ml x 9
	1000ml x 5
Order No.	B6100200

Standard package includes only shaker, tray need to be ordered separately.

Features

Gentle magnetic drive

The non-belt magnetic drive design affords for high performance of water resistance. This most gentle drive unit has exceptionally smooth start-up and braking behavior, and is specifically good for cell cultures.

Made of stainless steel

The entire housing of shaker is made of stainless steel (SUS304), meeting the demand of GMP's cleaning requirements. It is easy for the removal of any unwanted liquids and can be cleaned with chemicals.

No gas leaks

The thin Wire Cable connection between the shaker and the control box can pass through the sealing part of the inner glass door although no access port is in your incubator.

Placing remote controller with magnet

Depending on the material type of the incubator or the situation of the lab, placing remote controller is available with integrated magnets.

Accessories

Order No.	Name
B6100201	Sticky Plate
B6100202	Universal Tray



Sticky Plate



Universal Tray

Auxiliary Product

Peristaltic Pump

Compressed Air System

Steam Generators



Peristaltic Pump

Advancing the Science of Liquid Handling



Advanced Control Features

- > Icon Driven User Interface allows for easy setup and operation
- > Large Backlit LCD Display is easy to view from a distance
- > Durable Front Overlay is resistant to chemicals
- > Polarized and Angled Screen allows for glare free viewing
- > "Trouble-Free" Calibration Screen allows for accurate and quick calibration
- > Ultra High Precision Stepper Motor ensures repeatability and accuracy

User-Friendly Design Features

- > Low Profile Design reduces space required on the bench or in a hood
- > Pump Settings can be saved and recalled saving time in multi-use settings. Nine quick retrieval setups are available
- > Multi-Language Help Screens: English, Chinese, Deutsch, Francaise, Japanese, Korean, and Spanish

Bio Dose Elite Additional Features

- > Multiple stacking pump heads allow for higher volumes and multiple fill applications with one pump
- > Microcassette head is ideal for precision micro-dispensing of liquids in well plates, microtubes, or microcentrifuge tubes
- > Works with 2, 3, 6 and 8mm tubing
- > Pump allows for different ramping profiles to avoid splashing or foaming
- > Accommodates a variety of dispensing and process applications

Functionality	Bio Dose Pro	Bio Dose Elite
Modes	Dispense Mode	Dispense Mode and Flow Mode
Motor	Dual Speed 75 and 150 rpm	Variable Speed 0.5 to 400 rpm
Direction	Unidirectional; Clockwise	Bidirectional; Clockwise and Counterclockwise
Ramp	Not Offered	User Ramp Control for Dispense and Flow Modes 5 Profiles
Drawback	Not Offered	For Filling into a Closed Container
Pump Heads	Single	Single, Dual, Microcassette
Order No.	B1100100	B1100200

- > Peristaltic pump standard package includes.
- > Peristaltic pump, 2.3mm wall thickness single pump head; Silicone tube, ID 3mm, with built-in delivery nozzle and glass sinker, length 1.5m (Order NO. 374311); Silicone tube, ID 6mm, , with built-in delivery nozzle and glass sinker, length 1.5m (Order NO. 374313).

Technical Specification

Model Pump	Power supply V	Capacity W	Operating Speed rpm	Tubing Sizes Available (mm ID)	Dispense Ranges for Tubing ml	Flow Rate Ranges for Tubing ml/min	Accuracy Midrange	Delay Time / Sec	Weight kg	Dim. with Pump Head (HxWxD)	Optional Pump Head Support
Bio Dose Elite	100-240	37	0.5-400	2	0.01-9999.99	20.4-174	≤±1%	0.5-99.9	5.4	18×21×34cm	> Stack up to 2 Pump Heads
				3	0.01-9999.99	60-330	≤±1%				> Stacking Pump Head for 2.3mm Wall Tubing
				6	0.01-9999.99	270-1080	≤±2.5%				> Pump Head for 1.6mm Wall Tubing
				8	0.01-9999.99	200-1746	≤±2.5%				> Stacking Pump Head for 1.6mm Wall Tubing
Bio Dose Pro	100-240	37	75&150	2	0.01-9999.99	30&60	≤±1%	0.5-99.9	5.4	18×21×34cm	> 5-Channel Pump Head for Small-Bore Tubing
				3	0.01-9999.99	60&120	≤±2%				Pump Head for 1.6mm Wall Tubing
				6	0.01-9999.99	210&426	≤±2%				Pump Head for 2.3mm Wall Tubing
				8	0.01-9999.99	540&1080	≤±2.5%				

Suggested Application

Research, Development, and Quality Control

Transfer and distribution of fluids into smaller containers, serial dilutions, sample preparation, and media dispensing.

Pharmaceutical and Biotechnology

Dispensing microbiological media, pill coating, dilutions, transferring live cells, additions and harvests to and from bioreactors, packaging and filling.

Food and Beverage

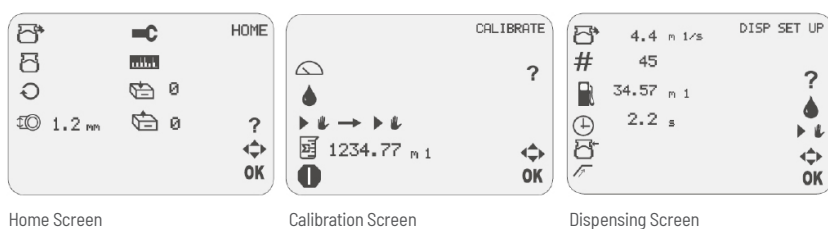
Common uses include dispensing flavorings, colorings, vitamins, and other additives in processing applications, and simple dispensing of end products on production lines or into shelf packages.

Waste Water and Sample Collection

Industrial and QC applications, environmental compliance hazardous/toxic materials evaluation and site sampling for liquids, sludge, earth/soil, water, etc. Ideal for sampling from barrels and drums.

International

The Icon Driven display and multi-language help screen work well in laboratories abroad.



Single Pump

Optional Pump Heads

Order No.	Description	Qty/Case
B1100101	Single Pump Head for 2.3mm Wall Tubing	1
B1100102	Optional Pump Head for 1.6mm Wall Tubing	1

Peristaltic Pumps Accessories

Order No.	Description	Qty/Case
Tubing Accessories		
B1100103	Hose Barb/Luer Adapter (fits 2 and 3mm)	1
B1100104	FootsBitch	1
B1100111	2 and 3mm Polypropylene Nozzle	6
B1100112	6mm Polypropylene Nozzle	6
B1100113	8mm Polypropylene Nozzle	6
B1100121	Small Glass Sinker (fits 2 and 3mm ID tubing)	6
B1100122	Large Glass Sinker (fits 6 and 8mm ID tubing)	6
Tubing Support Stand		
B1100105	Tubing Support Stand	1
Silicone Tubing Assembly, 2.3 mm Ball thickness		
B1100151	2mm ID, 5 ft Section (1.5m)	1
B1100152	3mm ID, 5 ft Section (1.5m)	1
B1100153	6mm ID, 5 ft Section (1.5m)	1
B1100154	8mm ID, 5 ft Section (1.5m)	1
Silicone Tubing, 2.3mm Ball thickness		
B1100155	2mm ID, 25 ft Section (7.62m)	1
B1100156	3mm ID, 25 ft Section (7.62m)	1
B1100157	6mm ID, 25 ft Section (7.62m)	1
B1100158	8mm ID, 25 ft Section (7.62m)	1
Microtest Manifolds		
B1100141	4 Position, Straight, 24 Bell	1
B1100142	8 Position, Straight, 96 Bell	1
B1100143	4 Position, Angular, 24 Bell	1
B1100144	8 Position, Angular, 96 Bell	1
B1100145	12 Position, Straight, 96 Bell	1
B1100146	12 Position, Angular, 96 Bell	1
Dispensing Cannulas B/Luer Lock		
B1100131	18 Gauge x 2 in	1
B1100132	14 Gauge x 4 in	1

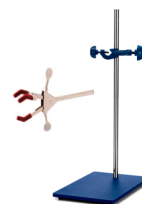
Hose Barb/Luer Adapter

The luer adapter allows connection to equipment and components with a female luer connector.



Tubing Support Stand

Optional tubing support stand conveniently holds the tubing in place for filling operations.



Footswitch

Utilize the convenience of a handsfree pump by installing the optional footswitch.



Silicone Tubing

Assembly consists of 1.5m (5-foot) section of silicone tubing with a wall thickness of 2.3mm, a borosilicate glass sinker, and a polypropylene delivery nozzle. Bulk tubing is also available.



Polypropylene Nozzle & Glass Sinker

The nozzle connects to the pump tubing for dispensing of liquids. The glass sinker is used to secure tubing when drawing from a container.



Microtest Manifolds & Dispensing Cannulas

Ideal for use with 24 and 96 well microplates. This unique dispensing system enables you to perform sample inoculations and cell feedings faster and more efficiently under sterile conditions.



Laboratory Air Compressor - P Series

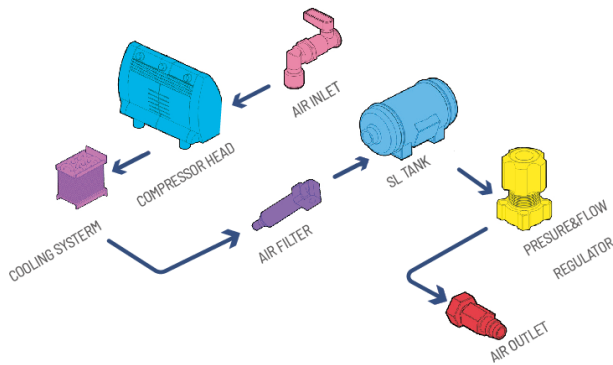
Air compressors deliver oil-free, pure, safe, and environmentally friendly air. They are characterized by stability, reliability, compact design, and quiet operation. Oil-free & Pure Air.

Utilizing a direct-drive system without belt transmission and equipped with noise reduction and vibration damping features, this series offers exceptionally quiet and low-vibration performance, standing out with superior performance among comparable products.

Features:

- > Safe & Eco-friendly.
- > Stable & Reliable.
- > Compact & Quiet.
- > Direct-Drive System.
- > Low Noise & Vibration.

Utilizing a direct-drive system without belt transmission and equipped with noise reduction and vibration damping features, this series offers exceptionally quiet and low-vibration performance, standing out with superior performance among comparable products.



Laboratory General Air Compressor Series

The P440 is suitable for laboratory applications that require lower flow rates and lower pressure compressed air.

The P640 is designed for continuous compressed air supply in laboratories. Equipped with a condenser and filter, it enhances the purity of the output air.

Model	P440	P640
Order No.	167440-22	167640-22
Maximum pressure (bar)	5	8
Maximum flow (L/min)	30	60
Adjustable output pressure (bar)	0~5	0~8
Port size	8mm quick connector or G1/4M	8mm quick connector or G1/4M
Tank volume (L)	30	30
Dimensions W x D x H [mm]	680×340×720	640×470×720
Weight(kg)	56	68
Noise (dB)	69	69
Power supply specifications	220-240V/50Hz	220-240V/50Hz
Rated power (W)	750	550

For air compressors with higher flow, lower dew point, and fewer impurities, please choose the GH series.

Purified Air Supply System

Pure, Compact, and Quiet

- > Internally equipped with a condenser, triple-filter system, and high-efficiency dryer to ensure precise air filtration and moisture removal. Capable of filtering particles as small as 0.01 μm , with output air achieving an atmospheric pressure dew point of -20°C .
- > Utilizes a high-quality stainless steel internal air tank, preventing internal rust and solid particle formation during prolonged operation, thereby guaranteeing output gas purity.
- > Delivers high-quality oil-free and water-free compressed air, suitable for supplying nitrogen generators and zero-air generators.

Safe and Environmentally Friendly

- > The motor includes an internal thermal protection switch, which automatically shuts down the unit in case of overheating and restarts it after cooling.
- > The internal air tank is fitted with a spring-loaded safety valve. If the device reaches the set maximum pressure, the safety valve opens automatically to prevent overload and overpressure.
- > The unit features a digital pressure switch with customizable start/stop pressures. The pump stops when the set pressure is reached, and an alarm is triggered if the pressure exceeds the preset value.
- > Clear and concise external maintenance and caution labels ensure correct operation and help prevent hazards caused by improper use.

Stable and Reliable

- > Maximum working pressure of up to 9.5 bar, continuously adjustable. Ideal for laboratory applications requiring higher pressure and continuous operation, while maintaining high flow output even at maximum pressure.
- > Adjustable output pressure and configurable motor start/stop pressures help extend the pump's service life and maintenance intervals.
- > Equipped with a high-precision display instrument for stable and accurate real-time pressure readings.
- > Neat and robust external housing structure ensures excellent protection and durability.



Model	GH12L	GH40L
Order No.	16712000-22	16740000-22
Maximum pressure (bar)	8.5	9.5
Maximum flow (L/min)	12	40
Adjustable output pressure (bar)	0 ~ 8.5	0 ~ 9.5
Port size	1/4" Ferrule or 6mm Quick Connector	1/4" Ferrule or 6mm Quick Connector
Tank volume (L)	8	2x8
Dimensions (W x D x H) mm	550×300×560	700×470×770
Weight(kg)	40	72
Noise (dB)	57	63
Power supply specifications	220-240V/50Hz	220-240V/50Hz
Rated power (W)	400	1200

Steam Generator

Features:

- > The shell is made of thick and high-quality steel plate with special spraying process, which is beautiful and durable;
- > Stainless steel water tank prolongs service life;
- > Separate water and electricity box, convenient maintenance, safe and reliable;
- > High temperature and high-pressure water pump can extract condensing hot water and save electric energy;
- > Triple safety guarantee of temperature, water level, pressure and safety valve;
- > Temperature, water level and pressure can be adjusted according to need, and power can be adjusted in four grades.

Application:

Biochemical, medical pharmaceutical, experimental research, food processing.



Specifications

Model	SG16	SG24	SG50	SG65
Power (KW)	12	18	36	48
Rated Pressur(bar)	8	8	8	8
Rated Steam Capacity(kg/h)	16	24	50	65
Saturated Steam Temperature(°C)	174.1	174.1	174.1	174.1
AC Power Voltage(V)	380	380	380	380
External Size(mm)	890*700*1050	890*700*1050	890*700*1050	890*700*1050
Water Inlet	DN15	DN15	DN15	DN15
Steam Outlet	DN15	DN15	DN20	DN20

Why choose Biostream?

Scalable bioprocessing solutions, co-created with costumers and backed by in-house expertise

At Biostream, technology is only part of the story. What truly makes us unique are the people behind our products. From sales to service, from application specialists to R&D, every step is driven by dedicated experts who bring knowledge, creativity, and care to our customers. The overview below shows how each product flows through our company, whether standard or custom, always guided by the people who make biotechnology accessible and scalable.



Customer

Defines the need and drives innovation forward, providing feedback that shapes products and ensures real-world relevance.



Sales

Translates customer needs into solutions, guiding choices and connecting clients with the right Biostream technology.



R&D

Designs and develops tailored solutions, transforming complex bioprocessing challenges into scalable, future-ready technologies.



Production

Builds reliable systems with precision and care, ensuring every product meets Biostream's high-quality standards.



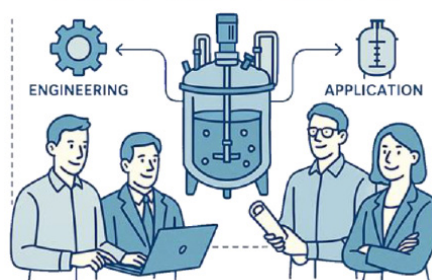
Application

Supports customers in real-world use, offering expertise, training, and optimization to maximize process success.

REMOTE SERVICE AND APPLICATION SUPPORT



ONE-STOP SHOP FOR PILOT PLANTS



TECHNICIAN RESEARCHER OPERATOR

USER GROUPS



Biostream International
 sales@biostream-international.com
 +31 (0) 314 2000 41
 P.O. Box 669 - 7000 AR Doetinchem - The Netherlands

Biostream US

Biostream (Shanghai) CO., Ltd.
 info@biostream.com
 +86 400-809-2061
 Room 719/722, Building 1, Lane 58, Huachi Road, Putuo District, Shanghai City