

ANIMAL CAGES FOR SMALL RODENTS (RATS) :

Orchid's Animal Cages are designed to facilitate animal welfare, meet research requirements and minimise the experimental variations. However, while selecting the cage, guidelines for laboratory animal facilities by concerned government organization regarding the minimum space requirements for housing of laboratory animals must be followed. As caging equipment is one of the most important factors in the physical and social environment of the experimental animal, Orchid has developed the largest range of cages meeting current norms and guidelines.



Features

- Wide range of animal house products for different animal species
- Durable and autoclavable (steam)
- Practicality of use
- Ergonomics

Body

- Autoclavable*
- Food Grade quality material Polypropylene material

S S Top Grill

Made of S. S. 304 material with duly spot welded and finished joints

- AISI 304 quality stainless steel material
- Provision for fixing water bottle
- Provision for Feed Pallets
- Fitted with two hooks of brass material for locking the grill to the top of the body of cage
- Fitted with tag holder

Polypropylene Rat Cage Type I (SRP01)

- Overall Size : 410 x 282 x 153mm (L X B X H)
- Floor Space : 634cm²
- CE Certified

- Uniform thickness of 4mm±0.5mm
- Excellent stackability for ease of handling and storage

- Main frame is made of 4mm S. S. 304 rod and rest of grill of 2mm S. S. 304 rod.
- Gap between S. S. rods is around 7mm.
- Designed to ensure perfect fit and locking throughout the complete cage body.
- Grill are designed such as to fit in second grill for ease of stacking with foldable partition for food and water bottle compartment.

* Autoclavable at 121°C temperature and pressure 15 LB/inch for 15 minutes



ORCHID SCIENTIFIC & INNOVATIVE INDIA PVT. LTD.

B 59, M. I. D. C., AMBAD, NASHIK- 422010

TEL: +91253-2387600, 2382525, 2381515 FAX: +91253-2381515

W : www.orchidscientific.com

E : orchidscientific@gmail.com, info@orchidscientific.com

ANIMAL CAGES FOR SMALL RODENTS (RATS) :

Polypropylene Rat Cage Type II (SRP02) :

■ **Overall Size** : 427 X 287 X 198mm
(L X B X H)

■ **Floor Space** : 821 cm²
■ CE Certified

Body

- Autoclavable*
- Food Grade quality material Polycarbonate material
- Uniform thickness of 4mm±0.5mm
- Excellent stackability for ease of handling and storage

S S Top Grill

Made of S. S. 304 material with duly spot welded and finished joints

- AISI 304 quality stainless steel material.
- Provision for fixing water bottle.
- Provision for Feed Pallets.
- Fitted with two hooks of brass material for locking the grill to the top of the body of cage.
- Fitted with tag holder.
- Main frame is made of 4mm S. S. 304 rod and rest of grill of 2mm S. S. 304 rod.
- Gap between S. S. rods is around 7mm.
- Designed to ensure perfect fit and locking throughout the complete cage body.
- Grill are designed such as to fit in second grill for ease of stacking with foldable partition for food and water bottle compartment.



* Autoclavable at 121°C temperature and pressure 15 LB/inch for 15 minutes



ORCHID SCIENTIFIC & INNOVATIVE INDIA PVT. LTD.

B 59, M. I. D. C., AMBAD, NASHIK- 422010

TEL: +91253-2387600, 2382525, 2381515 FAX: +91253-2381515

W : www.orchidscientific.com

E : orchidscientific@gmail.com, info@orchidscientific.com

ANIMAL CAGES FOR SMALL RODENTS (RATS) :

Polycarbonate Rat Cage Type I (SRC02) :

- Overall Size : 410 x 282 x 153mm (L X B X H)
- Floor Space : 634 cm²
- CE Certified

Polycarbonate Rat Cage Type II (SRC01) :

- Overall Size : 430 x 290 x 201mm (L X B X H)
- Floor Space : 821 cm²
- CE Certified

Body

- Autoclavable*
- Fully transparent body.
- Food Grade quality material Polycarbonate material.
- Uniform thickness of 4mm±0.5mm.
- Excellent stackability for ease of handling and storage.

S S Top Grill

Made of S.S. 304 material with duly spot welded and finished joints

- AISI 304 quality stainless steel material.
- Provision for fixing water bottle.
- Provision for Feed Pallets.
- Fitted with two hooks of brass material for locking the grill to the top of the body of cage.
- Fitted with tag holder.
- Main frame is made of 4mm S.S. 304 rod and rest of grill of 2mm S.S. 304 rod.
- Gap between S.S. rods is around 7mm.
- Designed to ensure perfect fit and locking throughout the complete cage body.
- Grill are designed such as to fit in second grill for ease of stacking with foldable partition for food and water bottle compartment.

Polypropylene Rat Cage Type III (SRP03):

- Overall Size : 650 X 500 X 215mm (L X B X H).
- Floor Space : 2288 cm².
- CE Certified.

Body

- Autoclavable*
- Food Grade quality material Polycarbonate material
- Uniform thickness of 5mm±0.5mm.
- Excellent stackability for ease of handling and storage.



* Autoclavable at 121°C temperature and pressure 15 LB/inch for 15 minutes



ORCHID SCIENTIFIC & INNOVATIVE INDIA PVT. LTD.

B 59, M. I. D. C., AMBAD, NASHIK- 422010

TEL: +91253-2387600, 2382525, 2381515 FAX: +91253-2381515

W : www.orchidscientific.com

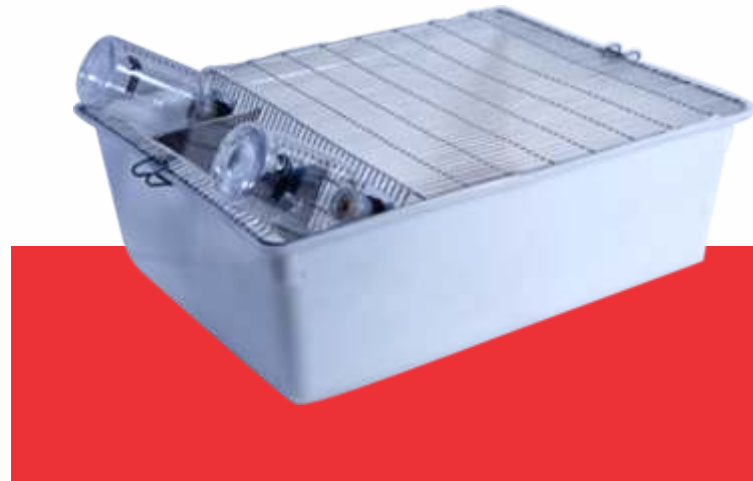
E : orchidscientific@gmail.com, info@orchidscientific.com

ANIMAL CAGES FOR SMALL RODENTS (RATS) :

Polypropylene Rat Cage Type III (SRP03) :

S S Top Grill : Made of S. S. 304 material with duly spot welded and finished joints

- AISI 304 quality stainless steel material.
- Provision for fixing water bottle.
- Provision for Feed Pallets.
- Fitted with two hooks of brass material for locking the grill to the top of the body of cage.
- Fitted with tag holder.
- Main frame is made of 5mm S. S. 304 rod and rest of 2-2.5mm S. S. 304 rod.
- Designed to ensure perfect fit and locking throughout the complete cage body.



- Gap between S. S. rods is around 7mm.
- Grill are designed such as to fit in second grill for ease of stacking with foldable partition for food and water bottle compartment.

WEIGHT IN gram	CAGE MODEL	FLOOR SPACE OF CAGE cm ²	NUMBER OF RAT PER CAGE AS PER NORMS (CPCSEA)		
			SRP01	SRP02	SPR03
Polypropylene Rat Cage					
<100	SRP01/SRP02/SRP03	634/821/2288	6	7	20
Up to 200	SRP01/SRP02/SRP03		4	5	15
Up to 300	SRP01/SRP02/SRP03		3	4	12
Up to 400	SRP01/SRP02/SRP03		2	3	8
Up to 500	SRP01/SRP02/SRP03		1	2	5
Polycarbonate Rat Cage					
WEIGHT IN (gm)	CAGE MODEL	634/821	SRC01	SRC02	
<100	SRC01 / SRC 02		7	6	
Up to 200	SRC01 / SRC 02		5	4	
Up to 300	SRC01 / SRC 02		4	3	
Up to 400	SRC01 / SRC 02		3	2	
Up to 500	SRC01/ SRC 02		2	1	

ORDERING INFORMATION

MODEL	SUITABLE FOR ANIMAL	Overall Dimensions mm (L X B X H)	COMPONENTS INCLUDED
SRP 01	Mice and Rat	410 X 282 X 153	P. P. Tray with S. S. grill
SRP 02	Rat	427 X 287 X 198	P. P. Tray with S. S. grill
SRP 03	Rat	650 x 500 x 215	P. P. Tray with S. S. grill
SRC 01	Rat	430 x 290 x 201	P. C. Tray with S. S. grill
SRC 02	Mice & Rat	410 x 282 x 153	P. C. Tray with S. S. grill



ORCHID SCIENTIFIC & INNOVATIVE INDIA PVT. LTD.

B 59, M. I. D. C., AMBAD, NASHIK- 422010

TEL: +91253-2387600, 2382525, 2381515 FAX: +91253-2381515

W : www.orchidscientific.com

E : orchidscientific@gmail.com, info@orchidscientific.com

Orchid's continuing products improvements program makes specifications subject to change without notice