

Aleris[®]

Class II Biological Safety Cabinets



LABCONCO[®]



Table of Contents

The Labconco Difference	3	Aleris Class II, Type A2 Biosafety Cabinets	8
Class II Biosafety Cabinets		Biosafety Cabinet Accessories	
How it Works	4	Cell Culture Accessories	12
Comfort Features	4	Exhaust Components	15
Advanced Biosafety	5	Class II Base Stands	17
Safety Features	6		
Performance Features	7		

The Labconco Difference: Over 50 Years of Biosafety Expertise.

Aleris Biosafety Cabinets (BSCs) deliver the performance, reliability, and efficiency modern laboratories demand. Built on Labconco's decades of expertise, Aleris makes trusted biosafety technology accessible to all researchers, providing the protection you and your work require, and propelling your science to new heights.

Advanced Biosafety. Powered by the intuitive Aleris OS, BSC status, operations, and alerts are clearly displayed on a 7" LCD touchscreen. Constant Airflow Profile™ (CAP) technology continuously regulates laminar airflow for your safety. Experience unparalleled efficiency engineered for today's demanding laboratory environments.

Trusted Quality. The Aleris is rooted in Labconco's 50-years of experience building BSCs, crafted with quality materials to ensure a long service life and dependable performance. Each Aleris cabinet undergoes rigorous individual testing to meet and exceed industry safety standards.

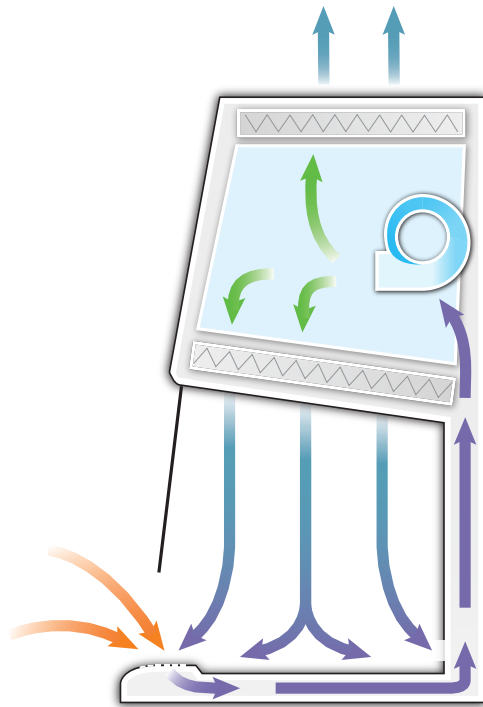
User-Inspired Design. Every detail of the Aleris is crafted with you in mind. Its ergonomic airfoil with integrated armrest ensures comfort during use, while the modular stainless steel work surface simplifies cleaning and maintenance. Aleris BSCs offer a workspace that prioritizes comfort, usability and productivity, so you can focus on what matters most—your science.

When you choose Aleris, you choose Labconco's hundred-year legacy of safety, performance and dependability.



Labconco Aleris® Class II Biosafety Cabinets

How it Works



Class II, Type A2 BSCs

Room air is drawn into the grille located in the air foil, and directed under the work surface by negative pressure. The air beneath the work surface contains unfiltered room air and air that has just passed through the work area. This air is drawn by the blower through the back plenum of the cabinet, where approximately 70% of the air is recirculated through the supply HEPA filter and back over the work area as laminar clean air. The balance of the contaminated air is discharged to the environment as clean air after passing through the exhaust HEPA filter.

- ▶ Room Air
- ▶ Contaminated, Negative Pressure Air
- ▶ Contaminated, Positive Pressure Air
- ▶ HEPA Filtered, Positive Pressure Air

Comfort Features



Service Fixtures, Outlets, and Controls – All within reach. Helping with accessibility and cleanability to prevent unnecessary contamination.

Curved Inlet Grille – Provides comfortable area to rest arms. No additional armrests are needed.

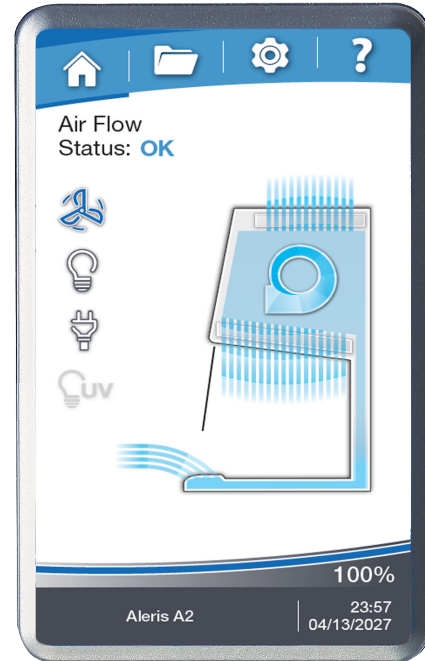
Quiet ECM Blower – Exceeds NSF requirements for quiet operation and runs cooler than other comparable motors.

Bright LED Lighting – Illuminates the interior up to 180 foot-candles (1,937 lux) for maximum visibility.

Modular Work Surface – Can be easily removed for cleaning, to promote sanitary laboratory practices.

Hydraulic Base Stands – Provides flexibility to adjust the work height to accommodate many users.

Labconco Aleris® Advanced Biosafety



Class II – and beyond

Expertly crafted for safety, performance and user comfort.

- Aleris OS with touchscreen interface
- Sustainable and efficient – and then some
 - Industry leading airflow stability
 - Exceptionally low energy and noise*
- Inclination Technology™ – advanced ergonomics for all-day comfort
- Smooth, coved design for easy disinfection in critical environments
- Full 3 year warranty

Aleris OS

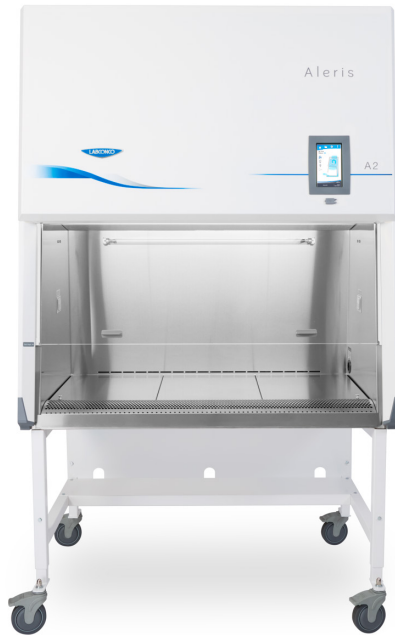
Finally, get total control of your cabinet.

- Large 17.8 cm (7") touchscreen display
- Intuitive home screen with airflow, filter life, and alert messages
- Full data logs & certification records
- Full remote connectivity for building management systems and more

*For models with single motor operation.

Labconco Class II Biosafety Cabinets

Safety Features



Unitized Construction – Welded 304 stainless steel hull and solid steel plenum are pressure tested and built to last.

ULPA Filters – Two 99.9995% efficient filters trap biohazards and produce an ISO Class 5 environment to keep users and their work safe. H14 HEPA filter option also available.

Easy to Decontaminate – Smooth, coved corners throughout interior and exterior.

Modular Work Surface – Work surface with lift out knobs is easily removed for cleaning.

Touchscreen Display – Large 17.8 cm (7") display clearly communicates cabinet status and alerts.

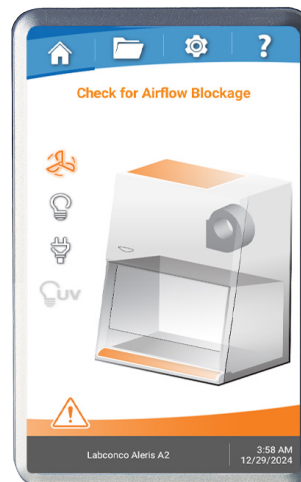
Aleris OS – Advanced cabinet control software clearly visualizes alert and alarm messages, highlighting impacted areas of the cabinet.

Vacu-Pass Cord & Cable Portal – Designed for easy passage of a cables through right-side wall. Included on models with Accessory package.



Modular work surface promotes easy cleaning.

Aleris OS – Keeping You Safe



Airflow Blockage and Sash Alarm display on Aleris OS.

Labconco Class II Biosafety Cabinets

Performance Features

Smart, sustainable

Labconco BSCs save on energy while providing longevity and comfort. Aleris BSCs are powered by innovative Electronically Commutated Motor (ECM) technology that makes a difference.

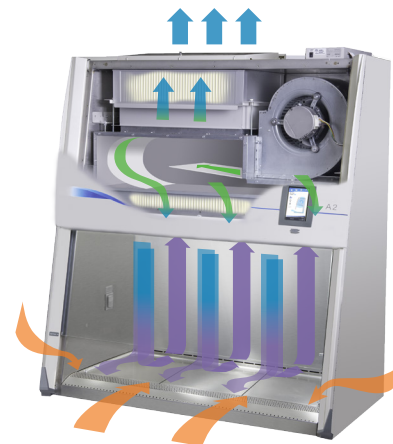
- 30% more efficient than other models
- Industry-low noise for single-blower cabinets, providing comfortable lab conditions
- 15+ year average motor life eliminates service costs
- 10+ year filter life reduces expensive replacement costs
- Generates less heat for cooler working conditions



Advanced air stability

Constant Airflow Profile™ (CAP) and BalanceFlow™ set a new standard in BSC airflow control to keep you safe. Auto-adjusting airflow ensures your BSC never misses a beat while you work, and the infinitely adjustable BalanceFlow plenum ensures even distribution throughout the work area.

- CAP auto-adjusts BSC airflows as filters load to keep you safe
- Precise operation keeps BSC airflows within 2% of their original setpoint
- Eliminates the need for airflow sensors, which are less accurate and require recalibration annually



- Room Air
- HEPA-Filtered Air
- Unfiltered Air Under Negative Pressure
- Unfiltered Air Under Positive Pressure

Operating Cost Comparison

BSC Energy Usage*	Labconco A2	Other Cabinet A	Other Cabinet B	Other Cabinet C
Motor Type	ECM	AC 3-Phase	ECM	ECM
Energy Consumption (watts)	180	414	299	180
Annual Energy Cost**	\$49.53	\$113.93	\$82.28	\$49.53
Annual Certification	\$250	\$250	\$250	\$250
Filter Change(s)	\$1,500	\$1,500	\$1,500	\$3,000
15-year Operational Cost	\$5,993	\$6,959	\$6,484	\$7,493

*Based on 1200 mm, 20.3 cm sash opening BSC, recirculating

**Based on 8-hr day, 2080 hours per year at \$0.1323/kWh

Aleris® Class II, Type A2 Biosafety Cabinets

Features & Benefits



Class II Airflow

Provides Personnel, Product, and Environmental protection from hazardous pathogens and particles.

Type A2

- Approximately 70% Recirculated, 30% Exhausted
- Recirculating or Canopy Ducted

Unitized Construction

A welded 304 stainless steel cabinet hull, modular work surface, and solid steel plenum are built to last.

Long-Life ULPA Filters

Dual filters are 99.9995% efficient (at 0.12 microns MPPS*), providing ISO Class 5 or better air.

Sustainable Design

The ECM motor and LED lighting consume as little as 150 watts.

Inclination Technology

A sloped sash, curved airfoil that functions as armrest and large working area maximize comfort.

Constant Airflow Profile™ (CAP)

Continuously monitors and maintains safe inflow and downflow to protect users and samples.

Advanced ECM Blower

Combined with CAP™ technology, reduces energy consumption and noise, improving user comfort and safety.

Effortless Disinfection

304 stainless steel interior withstands routine disinfection. Modular work surface is easily removed for cleaning.

Aleris OS

Conveniently displays all cabinet information on a bright 17.8 cm (7") touchscreen.

*MPPS= most penetrating particle size



Aleris OS Information Center

Touchscreen Display

Large 7" screen clearly visualizes cabinet conditions for effortless monitoring of cabinet behaviors.

Filter Life Indicator

Accurately displays remaining UPLA filter life. Alerts users at 20% and 10% before alarming at 0%.

Airflow Status

Displays current status of airflow within cabinet for consistent confirmation of safety.

User Convenience

Aleris OS includes a programmable experiment and UV light timer, data logging and a full certification menu.

Alerts & Alarms

Large, clear visual and audible signals notify users of unsafe cabinet conditions.

Data Logging & Connectivity

Export system data logs and records via USB, or connect to Aleris OS remotely for 24/7 cabinet monitoring with Remote Communication Board accessory.

Aleris® Class II, Type A2 Biosafety Cabinets

Ordering Information

Catalog Number Configurator:

Use this key to configure the nine digit catalog number to order your Aleris Class II, Type A2 Biosafety Cabinet.

3 5 2

Select the **WIDTH** of your cabinet. This is the fourth digit of your catalog number.

3 = 900 mm **4** = 1200 mm **5** = 1500 mm **6** = 1800 mm

Select the **SASH OPENING HEIGHT**. This is the fifth digit of your catalog number.

1 = 25.4 cm (10") **8** = 20.3 cm (8")

Select the **ACCESSORY PACKAGE** option: This is the sixth digit of your catalog number.

0 = None

1 = Includes factory-installed UV lamp (254 nm) and right side Vacu-Pass™ Cord & Cable Portal

Select the **TELESCOPING BASE STAND** option. This is the seventh digit of your catalog number.

0 = None **1** = Included

Select the **ELECTRICAL CONFIGURATION** and **PLUG TYPE**. These are the eighth and ninth digits of your catalog number.

02 = 115V, 15/20A, 50/60 Hz, with plug for Central and S. America

22 = 100V, 15/20A, 50/60 Hz, with plug for Japan

32 = 230V, 50/60 Hz, with Schuko plug

42 = 230V, 50/60 Hz, with plug for China/Australia

52 = 230V, 50/60 Hz, with plug for Great Britain (UK)

72 = 230V, 50/60 Hz, with plug for India

Plug Configurations



115V, 15A
for Central and
S. America

100V, 15A for Japan
(900mm and 1200mm)



115V, 20A
for Central and
S. America

100V, 20A for Japan
(1500mm and 1800mm)



230V
Schuko



230V
for China/Australia



230V
for Great Britain (UK)



230V
for India

Technical Specifications

Nominal Width	Energy Requirements*		Watts		Shipping Weight	Shipping Weight with Stand
	100V or 115V	230V	20.3 cm	24.5 cm		
900 mm	12A	6A	150	165	282 kg (621 lbs.)	316 kg (697 lbs.)
1200 mm	12A	6A	180	205	329 kg (725 lbs.)	367 kg (808 lbs.)
1500 mm	16A	8A	205	270	391 kg (862 lbs.)	432 kg (953 lbs.)
1800 mm	16A	8A	350	420	450 kg (992 lbs.)	495 kg (1091 lbs.)

* Dedicated, non-GFI outlet required. Acceptable voltage range +/-10% nominal value.

Aleris® Class II, Type A2 Biosafety Cabinets

Specifications



All models feature:

- Long-life DC Electronically Commutated Motor (ECM)
- * Constant Airflow Profile™ (CAP) airflow monitoring system
- * BalanceFlow™ plenum provides energy-efficiency and ultra-quiet operation*
- Intrinsically-safe negative pressure design
- Fully scannable 99.9995% supply and exhaust ULPA filters. H14 HEPA filters also available
- * Aleris OS and 17.8 cm (7") touchscreen information center with:
 - Airflow status and all alerts and alarms displayed in intuitive graphics
 - Full operational maintenance and certification logs for detailed record keeping
 - Status line for filter life and alerts to warn when filter life diminishes to 20% and 10% before alarming at 0%
 - UV light timer (on models with UV)
 - Password protection for cabinet settings
 - 8 Languages
- Bright, glare-free LED lighting up to 180 foot-candles (1937 lux). Located outside the contaminated work area
- * Curved stainless steel inlet grille with waterfall design and Reserve-Air™ Secondary Airflow Slots
- * Air-Wave™ Entry System at access opening to enhance containment
- * Contain-Air™ Negative Pressure Channel at top of sash to enhance containment

* Labconco exclusive feature

- * Two global universal electrical outlets.
 - 115V receptacle, maximum amperage draw 5A
 - 230V receptacle, maximum amperage draw 3A
- 10° angled, fully closing sash. 1/4" tempered safety glass with counterbalanced, anti-racking, easy-to-lift mechanism
- Unitized, pressure tested stainless steel interior. Optic White epoxy-coated steel exterior
- Modular removable towel catch located under work surface
- 20.3 cm or 25.4 cm (8" or 10") working sash height
- * 57.0 cm (22.5") max. sash opening & 69.0 cm (27") viewing height
- Removable, modular type 304 stainless steel, work surface with lift out knobs
- Nominal inflow velocity of 105 fpm (0.53 m/sec)
- Nominal downflow velocity of 55 fpm (0.28 m/sec).
- Approximately 70% air recirculation
- Noise level <62 dB (1200 mm [4'] 25.4 cm [10"] model)
- 3 m (10') power cord with plug
- Three year warranty

Models conform to the following standards:

- EN 12469 Certified
- NSF/ANSI 49 compliant
- ISO Class 5 (Grade A) per ISO 14644-1
- UL/ETL 61010-1 Listed
- CE/UKCA Mark (230V models)

Options include:

- Unassembled, epoxy-coated steel, non-welded telescoping base stand with leveling feet
- Accessory Package: UV lamp (254 nm), and right-side Vacu-Pass™ Cord & Cable Portal
- Ventus™ II Canopy Connection: See page 15

All models require (not included):

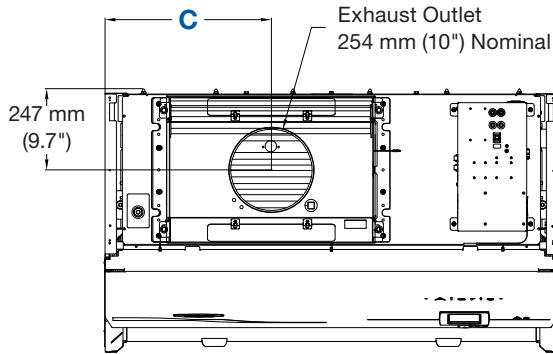
- Supporting base if non-welded stand option is not selected. See pages 16-19 for base stand options.

*U.S. Patent Pending



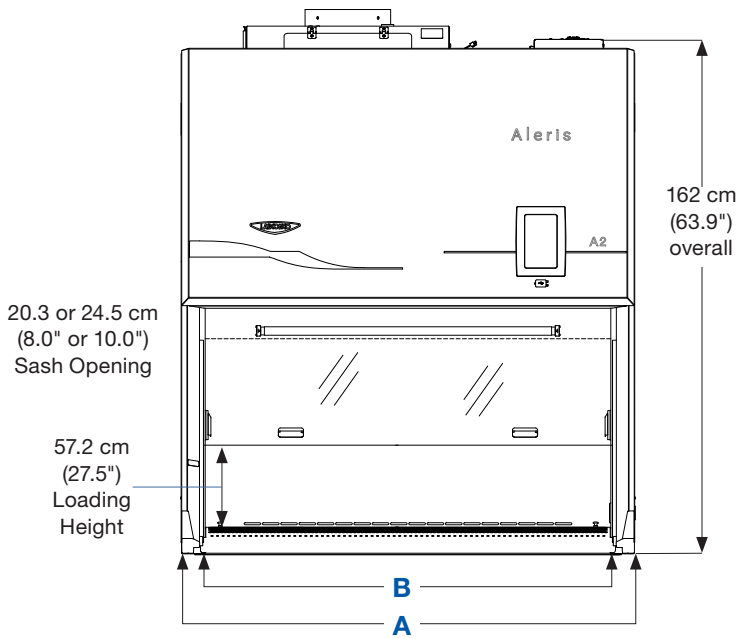
Aleris® Class II, Type A2 Biosafety Cabinets

Dimensional Data

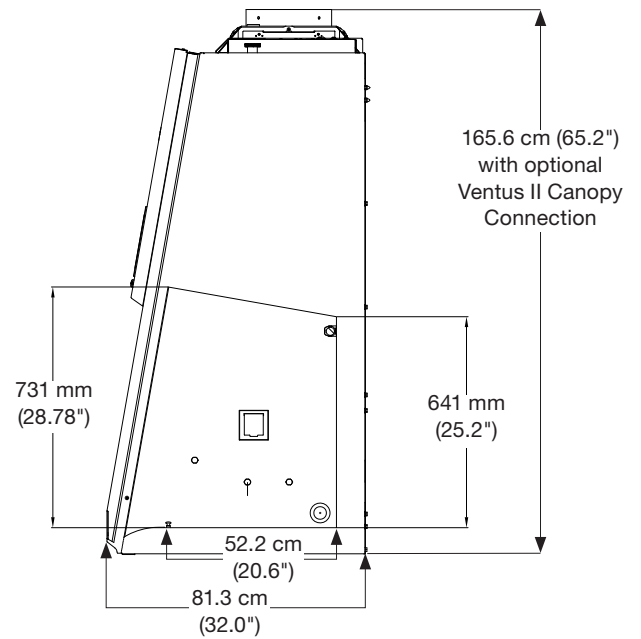


TOP

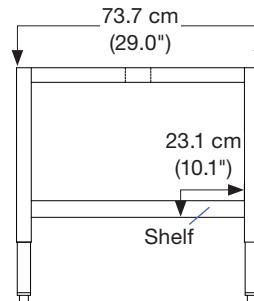
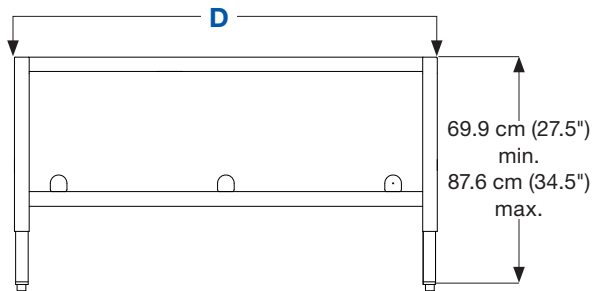
Nominal Width	A	B	C	D
900 mm	1076 mm (42.4")	927 mm (36.5")	368 mm (14.5")	977 mm (38.5")
1200 mm	138.2 cm (54.4")	123.2 cm (48.5")	50.5 cm (19.9")	128.3 cm (50.5")
1500 mm	168.7 cm (66.4")	153.7 cm (60.5")	68.1 cm (26.8")	158.8 cm (62.5")
1800 mm	199.1 cm (78.4")	184.2 cm (72.5")	83.6 cm (32.9")	189.2 cm (74.5")



FRONT



SIDE



Class II Biosafety Cabinets

Cell Culture Accessories



8024600 – Cell Culture Cart Pipette Insert Accessory. Adds six extra compartments for storing various size serological pipettes. Shipping weight 1.8 kg (4 lbs.)



8024700 – Cell Culture Cart Side Shelf Accessory. Two accessory side shelves for extra storage for bottles, gloves and other required items. Can mount to right or left side of cart for up to 4 shelves total. Shipping weight 2.3 kg (5 lbs.)



8024500 – Cell Culture Cart Interior Shelf. Divides the lower storage area for added flexibility, adjustable height. Shipping weight 3.6 kg (8 lbs.)



Shown with Accessory Pipette Insert and Side Shelves installed.

8024400 – Cell Culture Cart. Provides compact storage for common cell culture supplies like serological pipettes, gloves, lab tissues and disinfectants. Top compartment holds ~4 boxes of gloves. Small lab tissues can be dispensed from the front and larger lab tissues can be dispensed from the top through a removable cover. Built-in handles and easy-clean casters make positioning/moving the cart simple. Compact height for storing under cabinet when not in use. Overall dimensions: 60 x 48 x 69 cm (23.5" w x 19.0" d x 27.0" h). Shipping weight 38.5 kg (85 lbs.)

3852000 – Turntable. Lazy Susan rotates 360° to bring items within easy reach. Stainless steel surface and ball bearings. 30 cm (12") dia. Autoclavable. Shipping weight 2.7 kg (6 lbs.)



3689700 – Ergonomic Chair. 4-way articulating seat for personalized comfort. ISO Class 6 clean room compatible. Seat height adjusts from 48–66 cm (19" to 26"). Five-leg composite base with resistance casters, 62.0 cm (24.4") wide. Black vinyl upholstery. Shipping weight 19.5 kg (43 lbs.)



3859000 – Interior Shelf. Stainless steel shelf, 20 x 13 cm (8.0" x 5.0"), mounts to rear grille. Capacity: 1 kg (2.2 lbs.). Shipping weight 0.9 kg (2 lbs.)



3859100 – Cord Manager. Includes three stainless steel hooks and carabiners. Mounts to rear grille. Shipping weight 0.9 kg (2 lbs.)

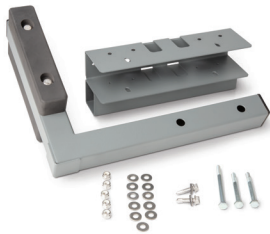
3746000 – Adjustable Footrest. Ergonomic design reduces strain and fatigue while working. 47 x 29 x 20 cm (18.5" w x 11.5" d x 8.0" h). Shipping weight 2.7 kg (6 lbs.)



Class II Biosafety Cabinets

Technology Mounts

Labconco offers several solutions for mounting computer equipment to our base stands. The PC Mount kit attaches to any Labconco base stand and provides a secure mounting platform for clamp-style articulating arms.



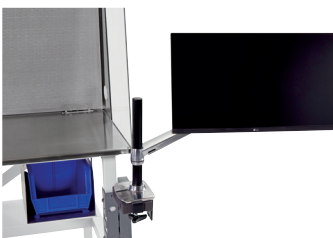
5315000—PC Mount kit. Provides a 10.2 x 17.8 cm (4" w x 7" d) area to secure most clamp-style mounting systems. Mounts on either the right or left side of the base stand. Compatible with all Labconco base stands (SoLo, Hydraulic and Telescoping). Mounting arms not included. See part numbers 3997300, 3997400 and 3997900. **Installation required.** Shipping weight 4.1 kg (9 lbs.)



3997900—Ergotron® WorkFit-LX Monitor and Keyboard Arms. Polished Aluminum. Flexible design allows independent placement of the monitor and the keyboard. Capacity 3.2–11.3 kg (7–25 lbs.) PC Mount kit required and sold separately. **Installation required.** Shipping weight 15.6 kg (35 lbs.)



3997400—Ergotron® LX Desk Laptop Arm. Polished Aluminum. Allows independent placement of the laptop. Capacity 3.2–5.4 kg (7–12 lbs.) PC Mount kit required and sold separately. **Installation required.** Shipping weight 6.8 kg (15 lbs.)



3997300—Ergotron® LX Desk Monitor Arm. Polished Aluminum. Allows independent placement of the monitor or tablet. Capacity 3.2–11.3 kg (7–25 lbs.) Tablet case not included. PC Mount kit required and sold separately. **Installation required.** Shipping weight 5.1 kg (11.2 lbs.)



3145000—Electronics Mount. Provides a solid attachment point for a camera onto a Labconco Class II BSC. The articulating design includes 4-way movement and a 1/4" tripod mount to accommodate a variety of devices. Includes optional display screen for use with a projector. Attaches to BSC frame. Compatible with Aleris series biosafety cabinets only. **Installation required.** Shipping weight 2.7 kg (6 lbs.)

Class II Biosafety Cabinets

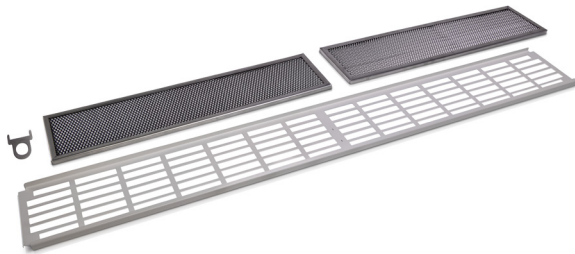
Accessories



3747500—Service Fixture Kit. Includes serrated hose tip with ball valve, quarter turn control handle and hardware. Cabinets are factory-prepared for up to six fixtures. **Installation required.** Shipping weight 0.9 kg (2.0 lbs.)



IV Bar Kits. Includes IV bar, mounting hardware and four hangers, two short and two long. **Installation required.**



Washable Prefilter Kits. Washable Pre filter Kits. Each kit consists of a washable/reusable, metal screen-type prefilter and installation hardware. **Installation required.**

Catalog Number	Cabinet Width	Shipping Weight
3288600	900 mm (3')	1.8 kg (4.0 lbs.)
3288601	1200 mm (4')	2.3 kg (5.0 lbs.)
3288602	1500 mm (5')	2.7 kg (6.0 lbs.)
3288603	1800 mm (6')	3.2 kg (7.0 lbs.)



3282400—Vacu-Pass Cord & Cable Portal Kit. NSF-approved portal allows passage of a cable through right-side wall. Accommodates cords/cables with a diameter of 6.35 mm, 9.53 mm, and 12.7 mm (1/4", 3/8" and 1/2"). **Installation required.** Shipping weight 0.5 kg (1 lbs.)



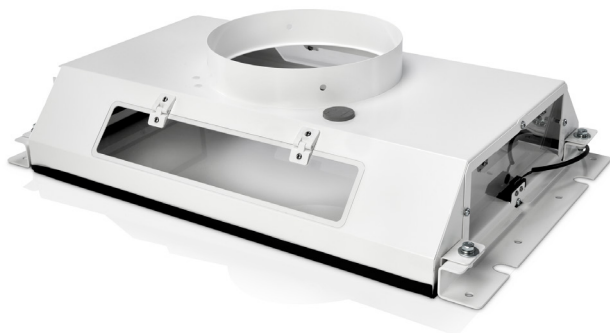
3289100 - UV Lamp Kit. For field install of UV lamp into cabinets that were not factory equipped for UV. Includes 254 nm UV lamp and ballast. All voltages. **Installation required.** Shipping weight 2.3 kg (5 lbs.)

3408500—Sash-Glider Kit. Cleans both sides of sash while cabinet is closed to avoid contamination risks. Includes two microfiber sheets and ten disposable scrubbing strips. Shipping weight 2.0 kg (5 lbs.). Replacement strips, (3408600) package of 25. Shipping weight 0.9 kg (2 lbs.)



Aleris® Class II Biosafety Cabinets

Exhaust Accessories



Ventus II Canopy Connection. For thimble exhausting Type A2 cabinets. NSF approved design detects insufficient exhaust in less than one second and signals Aleris OS with visual and audible alarms. Alarm increases motor to maximum speed for personnel safety. Adds only 3.6 cm (1.4") to cabinet height. Epoxy-coated steel. Collar is 25.4 cm (10") ID. Exhaust connection is required. **Air-tight Damper (3776800) recommended.** Shipping weight 34 kg 75 lbs.)

Catalog Number	For Use With	Required Exhaust Volume* CFM @ x" w.g.	
		20.3 cm Sash	25.4 cm Sash
3889210	900 mm Type A2	275@0.03"	319@0.04"
3889211	1200 mm Type A2	385@0.09"	462@0.12"
3889212	1500 mm Type A2	473@0.13"	578@0.18"
3889213	1800 mm Type A2	627@0.20"	770@0.27"

* Exhaust volumes listed are concurrent balance values obtained in the exhaust duct via traverse methodology. Actual volume may be lower using Direct Inflow Measurement methodology.

3289000 – Remote Communication Board. Kit includes three dry contact relays, USB data output, RS-232 RJ45 data output and an Ethernet pass-through. Factory installed on Type B2 Cabinets. **Installation required. For Type A2 cabinets only.** Shipping weight 0.5 kg (1 lb).



Flex Duct Connection.



Catalog Number	Length	Shipping Weight
7034800	30.5 cm (1')	2.3 kg (5 lbs)
7034801	91.4 cm (3')	4.5 kg (10 lbs)
7034802	182.9 cm (6')	6.8 kg (15 lbs)
7034803	304.8 cm (10')	11.3 kg (25 lbs)

3776800 – Air-Tight Damper. Mounts atop Ventus Canopy to adjust exhaust airflow and closes for decontamination procedures. Manually adjustable. Type 304 stainless steel. 25.4 cm (10") high with 25.4 cm (10") dia. OD inlet & outlet. Shipping weight 6.3 kg (14 lbs.)



3858800 – Backdraft Damper. Mounts in vertical duct run to prevent reversal of flow of the exhaust system. 8 cm (3") high with 25.4 cm (10") dia. OD inlet and outlet. Shipping weight 0.9 kg (2 lbs.)



Aleris A2 Airflow Sensor.

Allows display of inflow and downflow velocities on screen. **Installation and certifier calibration required.**



Catalog Number	Cabinet	Shipping Weight
3277600	A2	0.9 kg (2 lbs)
3277610	A2 with Canopy	0.9 kg (2 lbs)

Class II Biosafety Cabinets

Aleris Unassembled Telescoping Base Stand



Optic White stand with accessory caster kit shown

Standard Features

- When ordered with an Aleris BSC, unassembled design ships on pallet
 - Telescoping legs are adjustable to eight height positions at installation in 2.5 cm (1") increments to provide a working height from 76.2 cm (30") to 94.0 cm (37")
 - Durable Optic White epoxy-coating for Aleris biosafety cabinets
 - Stands feature three pass-throughs in rear panel.
 - Supports loads up to 454 kg (1000 lbs)
 - Durable 1.75" steel frame
 - Fixed leveling feet
 - NSF approved
 - ADA-compliant
- See drawings on pages 11.

5190100 - Caster Kit. For converting telescoping base stands with fixed feet to mobile stands. Kit includes four 12.7 cm (5") dia., toe-locking, glass-filled nylon casters that are resistant to most chemicals. Easy-clean and maintenance free. Load rating for each caster is 113.4 kg (250 lbs). Casters add up to 17.8 cm - 27.9 cm (7" - 11") to the overall depth of the base stand. **Installation required.** Shipping weight 9.8 kg (22 lbs)

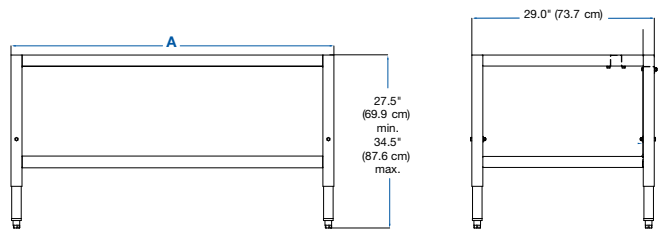


5190200—Seismic Bracket Kit. Secures base stand to the floor in earthquake-prone regions. Includes four stainless steel brackets and hardware for attachment to stand. **Floor hardware and installation required.** Shipping weight 9.8 kg (22 lbs)



Class II Biosafety Cabinets

Aleris Telescoping Base Stand



Nominal Width	A	Shipping Weight
900 mm	97.8 cm (38.5")	45 kg (100 lbs.)
1200 mm	128.3 cm (50.5")	48 kg (115 lbs.)
1500 mm	158.8 cm (62.5")	54 kg (120 lbs.)
1800 mm	189.2 cm (74.5")	57 kg (125 lbs.)

Standard Features

- Fully Welded design
- Supports loads up to 1814 kg (4,000 lbs)
- Castered models supports loads up to 454 kg (1,000 lbs)
- Durable 4.45 cm (1.75") tubular, epoxy-coated steel frame
- Telescoping legs are adjustable to eight height positions at installation in 25 mm (1") increments to provide a working height from 76.2 cm (30") to 94.0 cm (37")
- Available with either fixed leveling feet or 12.7 cm (5") easy-clean casters with toe locks

Catalog Number Configurator:

Use this key to configure the seven digit catalog number to order your Optic White Telescoping Base Stand.

5 1 7 3 0

Select the **NOMINAL STAND WIDTH** of your cabinet. This is the fifth digit of your catalog number.

- 3 = 900 mm (3')
- 4 = 1200 mm (4')
- 5 = 1500 mm (5')
- 6 = 1800 mm (6')

Select the **TYPE OF FEET** required. This is the sixth digit of your catalog number.

- 0 = Leveling Feet
- 1 = Casters

5190100 - Caster Kit. For converting telescoping base stands with fixed feet to mobile stands. Kit includes four 12.7 cm (5") dia., toe-locking, glass-filled nylon casters that are resistant to most chemicals. Easy-clean and maintenance free. Load rating for each caster is 250 lbs. Casters add up to 17.8 cm - 27.9 cm (7" - 11") to the overall depth of the base stand. **Installation required.** Shipping weight 9.8 kg (22 lbs)



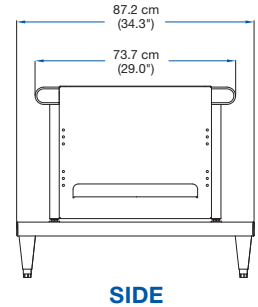
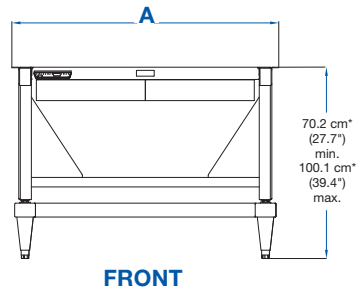
5190200—Seismic Bracket Kit. Secures base stand to the floor in earthquake-prone regions. Includes four stainless steel brackets and hardware for attachment to stand. **Floor hardware and installation required.** Shipping weight 9.8 kg (22 lbs)



* Contact Labconco for Glacier White base stands for Axiom, Legacy Purifier Logic and Legacy Delta BSCs.

Class II Biosafety Cabinets

Universal Hydraulic Base Stand



Standard features

- For all Optic White Labconco Class II BSC models*
- Supports loads up to 454 kg (1000 lbs)
- Durable epoxy-coated Optic White steel frame
- Infinitely adjustable for working heights of 71.1 cm - 101.6 cm (28" - 40")
- Four user-programmable memory positions
- Leveling feet or 12.7 cm (5") diameter, toe-locking, glass-filled nylon casters that are resistant to most chemicals.
- Front-accessible up/down switch, right or left side compatible
- Programmable safety stops to limit upper and lower travel

Nominal Width	A	Shipping Weight
900 mm (3')	98.0 cm (38.6")	81 kg (178 lbs.)
1200 mm (4')	128.5 cm (50.6")	103 kg (227 lbs.)
1500 mm (5')	159.0 cm (62.6")	118 kg (261 lbs.)
1800 mm (6')	189.5 cm (74.6")	134 kg (295 lbs.)

5190300—Seismic Kit, Hydraulic Base Stand. Secures hydraulic base stand to floor. Includes stainless steel brackets and hardware for attachment to stand. **Floor hardware and installation required.** Shipping weight 5.4 kg (12 lbs)

Catalog Number Configurator:

Use this key to configure the seven digit catalog number to order your Aleris Universal Hydraulic Base Stand.

5 1 8

Select the **TYPE OF FEET** required. This is the fourth digit of your catalog number.

0 = Leveling Feet **1** = Casters

Select the **NOMINAL STAND WIDTH**. This is the fifth digit of your catalog number.

3 = 800 mm **4** = 1200 mm **5** = 1200 mm **6** = 1500 mm

Select the **ELECTRICAL CONFIGURATION** and **PLUG TYPE**. These are the sixth and seventh digits of your catalog number.

00 = 115V, 15A, 60 Hz, with plug for Central and South America and Japan

10 = 230V, 50/60 Hz, with plug for Central and South America and Japan

30 = 230V, 50/60 Hz, with plug for Schuko plug

40 = 230V, 50/60 Hz, with plug for China/Australia

50 = 230V, 50/60 Hz, with plug for Great Britain (UK)

70 = 230V, 50/60 Hz, with plug for India

Plug Configurations



115V, 15A
for Central and
South America



230V
for Central and
South America



230V
Schuko



230V
for China/Australia



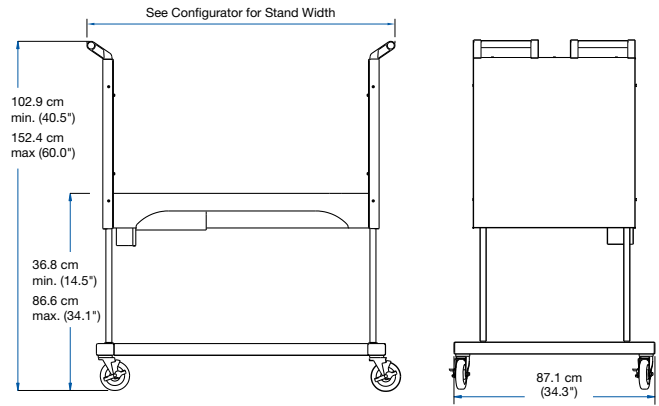
230V
for Great Britain (UK)



230V
for India

Class II Biosafety Cabinets

SoLo™ Hydraulic Lift Base Stand



FRONT

SIDE

Standard Features

- Hydraulic lift provides flexible height adjustment and permits passage through standard doorways as low as 191.7 cm (75.5") high for A2 cabinets.
- Infinitely adjustable height provides work surface heights from 43.2 cm - 94.0 cm (17" - 37").
- Supports loads up to 454 kg (1000 lbs)
- 12.7 cm (5") diameter, toe-locking, glass-filled nylon casters. Resistant to most chemicals, easy-clean and maintenance-free.
- Durable epoxy-coated steel construction
- Two handle bars facilitate transport.

Catalog Number Configurator:

Use this key to configure the seven digit catalog number to order your SoLo Hydraulic Base Stand.

5 1 8 5

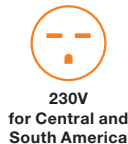
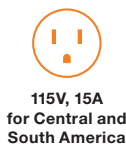
Select the **NOMINAL WIDTH** of your cabinet. This is the fifth digit of your catalog number.

- 3** = 900 mm Overall Stand Width 136.2 cm (53.6")
Shipping Weight: 177 kg (390 lbs)
- 4** = 1200 mm Overall Stand Width 166.6 cm (65.6")
Shipping Weight: 190 kg (420 lbs)
- 5** = 1500 mm Overall Stand Width 197.1 cm (77.6")
Shipping Weight: 209 kg (460 lbs)
- 6** = 1800 mm Overall Stand Width 227.6 cm (89.6")
Shipping Weight: 227 kg (500 lbs)

Select the **ELECTRICAL CONFIGURATION** and **PLUG TYPE**. This is the sixth digit of your catalog number.

- 00** = 115V, 15/20A, 60 Hz, with plug for Central and S. America and Japan
- 10** = 230V, 50/60 Hz, with plug for Central and S. America and Japan
- 30** = 230V, 50/60 Hz, with Schuko plug
- 40** = 230V, 50/60 Hz, with plug for China/Australia
- 50** = 230V, 50/60 Hz, with plug for Great Britain (UK)
- 70** = 230V, 50/60 Hz, with plug for India

Plug Configurations



*Contact Labconco for Glacier White SoLo base stands for Axiom, Legacy Purifier Logic and Legacy Delta BSCs.



SINGAPORE

Labquip (S) Pte Ltd
625 Aljunied Road, #03-02
Aljunied Industrial Complex,
Singapore 389836
Tel: +65 6779 2266
Fax: +65 67783255
Email : mahendran@labquipasia.com



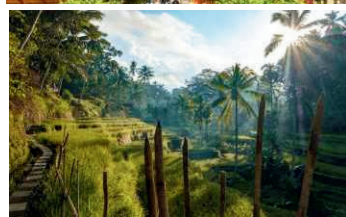
INDIA

Labquip (India) Pvt Ltd, "V"
Times Square, Office No. 513,
5th Floor, Plot no.3, Sector-15,
CBD Belapur, Navi Mumbai-400614, India.
Tel: +91-22-41275522
Contact: Mr Sunil Pandey
Email: sunil@labquipasia.com



THAILAND

Labquip (Thailand) Limited
799/43 Space Lat Phrao-Mengjai Village
Soi Lat Phrao 80 (Janthima)
Wangthonglang, Wangthonglang,
Bangkok 10310, Thailand
Tel: +662-539-7588, Fax: +622-539-7589/90
Contact: Chakchai Kitaweeppattana (Chak)
Email: chakchai@labquipasia.com



INDONESIA

PT Labquip Indoprima
Ruko Prominence RJS 38D
No.15 Alam Sutera - Serpong
Tangerang 15810 - Indonesia
www.labquipindoprime.co.id
Tel: 021-29853828, 29853829
Contact:Gelli
Email: gelli@labquipasia.com



VIETNAM

Labquip Vietnam
No 11, 125 Alley, trung Kinh Str
Cau Giay District, Hanoi
Vietnam
Tel: +84-4-37822196, Fax: +84-4-37822197
Contact: Chakchai Kitaweeppattana (Chak)
Email: chakchai@labquipasia.com



TAIWAN

LabIVF-Labquip Taiwan Int'L Co., Ltd
6F-17 No.26 Lane 521
Yangguang Street, Neihu District
Taipei City 114, Taiwan, R.O.C.
Tel: +886-22659 5717, Fax: +886-2-2659 5737
Contact: Gary Peng
Email: gary@labivf.com



PHILIPPINES

Labquip Philippines
Units 4 & 5, 5th Floor, Borland Enterprise Center, Macaria
Business Park, Carmona, Cavite, Philippines 4116
Tel: +63 (046) 419 1220
Contact: Mahendran / Amira
Email: mahendran@labquipasia.com / amira@labquipasia.com



MALAYSIA

Labquip (M) Sdn Bhd
D-01-02 Block D, Sekitar 26 Enterprise,
Persiaran Hulu Selangor, Seksyen 26,
40400 Shah Alam, Selangor Darul Ehsan
Tel: +603-5614 1777, Fax: +603-5614 4969
Contact : Mahendran
Email : mahendran@labquipasia.com