



[www.labquip.com.my](http://www.labquip.com.my)

# **LABQUIP**

*Lab Equipment Specialist*

**37** Years in Business







# STIRRLAB

## Centrifuges



Smart Personal Centrifuge



Versatile Lab Centrifuge



Versatile Refrigerated Lab Centrifuge



High Speed Refrigerated Centrifuge



Doctor Centrifuge

## Vortex Mixer



Mini Vortex Mixer



Digital Vortex Mixer



Multi Tube Vortexer



Tube Roller

## Rotator



Disk Rotator

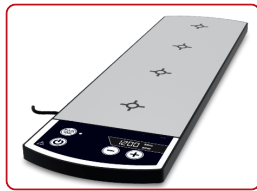


Digital Plate Rotator

## Magnetic Stirrer



Slim Electromagnetic Stirrer



4 Slim Electromagnetic Stirrer



Analog Magnetic Stirrer



Hot Plate Magnetic Stirrer



High Capacity Stirrer

## Overhead Stirrer



Junior Overhead Stirrer  
OSJ-10



Overhead Stirrer  
OSJ-8, OSJ-15, OSJ-20, OSJ-40



Overhead Stirrer  
OSJ-50, OSJ-75, OSJ-100

# WARING COMMERCIAL

## Model : 8011 Series Blender without Timer

- capacity : 1liter / 1.2 Liter
- Switch setting : 2
- Speed : 18000 - 22000 RPM
- Base : Epoxy Coated Motor Housing
- Container : Available container with handle & Lid
- 8011S - Stainless Steel Container
- 8011G - Glass Container



## Model : 8010 Series Blender with Timer

- capacity : 1liter / 1.2 Liter
- Switch setting : 2
- Speed : 18000 - 22000 RPM
- Timer : 60 seconds mechanical timer
- Base : Epoxy Coated Motor Housing
- Container : Available container with handle & Lid
- 8010S - Stainless Steel Container
- 8010G - Glass Container



## Model : 800 Series Blender

- capacity : 1liter / 1.2 Liter
- Switch setting : 2
- Speed : 18000 - 22000 RPM
- Base : Epoxy Coated Motor Housing
- Container : Available container with handle & Lid
- 800S - Stainless Steel Container
- 800G - Glass Container



## Model : LB20 Series Variable Blender

- capacity : 1liter / 1.2 Liter
- Switch setting : Variable
- Speed : Torque 500 - 20000 RPM
- Base : Die-cast , Epoxy Coated Motor Housing
- Container : Available container with handle & Lid
- LB20ES - Stainless Steel Container
- LB20EG - Glass Container



## Model : CB15 Series Food Blender with Electronic Keypad

- capacity : 4 Liter
- Switch setting : 3-speed plus Pulse Electronic Membrane Keypad
- Base : Epoxy Coated Motor Housing
- Container : Available container with two handle & Lid
- CB15E - Stainless Steel Container
- CB15TE - Stainless Steel Container with timer 3 minutes
- CB15VXE - Stainless Steel Container with adjustable speeds , built in RPM display



## Model : TBB Series Commercial Blender

- capacity : 1.5 Liter
- Switch setting : Toggle / Electronic / Variable Speed control
- Speed : 1000 - 17000 RPM , Pulse max 24000 RPM
- TBB145E - Toggle Switch control
- TBB160E - Electronic Touchpad controls with 60 seconds timer
- TBB175E - Electronic Touchpad controls with Variable speed control



## Model : MX Series HI POWER Blender

- capacity : 2 Liter
- Switch setting : 2
- Speed : Paddle Switch with Pulse
- Container : BPA-Free Copolyester container with handles
- MX1000TX - Paddle Switch with pulse
- MX1100TX - Electronic with Pulse Timer
- MX1200TX - Variable Speed
- MX1050TX - Electronic Touchpad
- MX1500TX - Reprogrammable, Adjustable Speed control with sound enclosure



## Model : WSG30E Chopper / Grinder

- Grinds spices finely in seconds
- 1.5-cup capacity (dry only)
- PULSE feature to manage consistency of grind
- Includes 3 dishwasher-safe, stainless steel grinding bowls and lids



## Model : WSG60E Chopper / Grinder

- Commercial grade, 1 HP motor runs at 20,000 RPM
- Extra durable, stainless steel grinding blades
- Comes with two 3-cup stainless steel grinding bowls and lids



## Model : WFPI6SCDE Food Processor

- 2 peak input HP commercial motor
- Die-cast housing
- 3.75-liter, unbreakable, clear-view batch bowl with LiquiLock® Seal System
- Continuous-feed chute for large-volume processing
- ON, OFF and PULSE push-button controls



## Model : WFPI4SE Food Processor

- 1 HP motor
- 3.3-liter, unbreakable, clear-view batch bowl with LiquiLock® Seal System for processing liquids
- Easy ON, OFF and PULSE control paddles
- Extra-large feed tube and pusher





**THE BEST LAB PARTNERS YOU'LL EVER HAVE**

PolyScience Circulating Baths are as precise as they are reliable. Every product comes equipped with innovative proprietary features, from the quiet, energy-efficient heat removal of our WhisperCool™ Environmental Control System to the fast-acting temperature control of Cool Command™ Technology. Our Circulating Baths are easy to use, offering interface controller flexibility, clear navigational buttons and menu prompts, ergonomic design for easy repositioning and simple fluid connections. These hard-working machines were designed to make your life easier and more productive.

**The topic of discussion is General Purpose Water Baths.**

PolyScience water baths are the first baths on the market to utilize a full color TFT display. Our clear hinged gable cover continues to be a standard feature on all of our water baths and the intuitive plain-language user interface offers five selectable languages.

Research, communication and listening to our customers' needs is what drives the innovation to make the line of PolyScience Water Baths stand out from the competition. These intelligent water baths are the perfect blend of control, convenience, safety and, of course, budget.

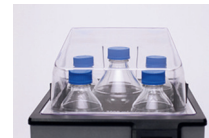


**FEATURES**

- Operates in five (5) languages
- User-settable High Limit Value
- Eco Mode aster timed run is complete
- User-settable alarms: audible, visible or both
- Displays actual and set point temperature simultaneously
- Programmable pre-sets for frequently used temperatures
- Integrated timer
- Hinged gable cover
- Calibration off-set feature
- Reservoir sizes from 2 to 28 liters
- Reservoir made of 304 Stainless Steel
- Reservoir drain (10 liter and larger baths)
- Primary and automatic safety thermostats
- Also compatible with waterless bath beads



Adjustable pre-sets make selecting commonly used temperatures as simple as pressing a button.



See-through gabled cover accommodates flasks and other tall sample vessels, tilts out of the way when opened to allow condensate to drain back into the bath.

**Top-of-the-line Chillers and Recirculating Coolers**  
Our Chillers and Recirculating Coolers are at the forefront of the industry, delivering on a promise that we've upheld for over 60 years: to create innovative products that offer superior heat removal, day after day.



Heated Circulators



Immersion Circulators & Open Tanks

Refrigerated/Heated Circulating Baths



Stainless Steel Open Bath Systems



Polycarbonate Open Bath Systems

Benchtop Chillers (0.4-1.3 kW cooling)



DuraChill Portable Chillers (0.7-2.9 kW cooling)



High Capacity Recirculating Chillers (4-11 kW cooling)



Recirculating Coolers





## Overview of Digital Benchtop Ultrasonic Cleaners

### Efficient and User-Friendly Ultrasonic Cleaner for Dental and Surgical Instruments

This ultrasonic cleaner is designed to operate at maximum efficiency regardless of water levels. It has an inbuilt protective mechanism against thermal shock and empty tank operation, ensuring reliable and safe use. The touch control keypad and display make it easy to use, with a programmable silent key press for the countdown timer, water temperature, and power level.

Using ultrasonic technology, this cleaner delivers precise and thorough cleaning, making it the most effective method for removing fine foreign soil from crevices and all areas of dental and surgical instruments. Additionally, it can remove stubborn soil and blood contaminants without damaging the instruments. Compared to conventional cleaning methods, this ultrasonic cleaner can clean in a fraction of the time, reducing overall operational and running costs.



### Ultrasonic Irrigator S2800

The Soniclean Ultrasonic Irrigator is a state-of-the-art machine designed specifically to optimally clean cannulated surgical instruments, but can also clean non-cannulated surgical instruments, individually or simultaneously. This represents valuable time saving in the cleaning of surgical instruments for busy CSSD Hospital Operations. This fully-automatic and programmable machine has received wide general acceptance with a large number of hospitals in Australia and in many other countries. Our Irrigator also offers reporting options, so our clients can feel assured by a machine used for daily practice. Additionally, da Vinci instruments can be cleaned using Soniclean's S2800 machine. The machines are manufactured and tested in accordance with the requirements of: AS 2773, AS 4187 and HTM 2030.



### Ultrasonic Washer

### Ultrasonic Accessories

Soniclean provides a large selection of Cleaning Detergents and Accessories for the complete range of its ultrasonic products. The range of detergents have been specifically formulated to work in harmony with the Soniclean range of Ultrasonic Cleaners. They have been tested and refined to give the best outcome for Soniclean's machines. The range of accessories have been developed to meet customer needs for many and varied applications. They include ultrasonic performance meters, lids, baskets, trays, purpose-designed holders and beakers – see the complete list overleaf







**LABORATORY FUME HOOD**



**DUCTLESS FUME HOOD**



**LAMINAR FLOW HOOD**



**CHEMICAL SAFETY CABINET**



*SCHONER Acid Corrosive Safety Cabinet*



*SCHONER Flammable Safety Cabinet*

# ESNICO®

## Portable Eyewash Station



Portable Eyewash Station,  
Yellow, 14Gal, Model: ESW06014



Portable Eyewash with Cart, Yellow,  
14Gal, Model: ESW06014-CA

## Emergency Showers and Eyewashes



Emergency Shower and Eyewashes with  
Foot Pedal, Stainless Steel with Epoxy  
Coating, Standard, Model: ESW010YS-F



Emergency Shower and  
Eyewashes with Foot Pedal,  
Stainless Steel, Standard, Model:  
ESW010MS-F

## Wall Mounted Eyewashes



Wall Mounted Eyewashes, Stainless  
Steel, Standard, Model: ESW020MS



Wall Mounted Eyewashes,  
Stainless Steel, High Configuration,  
Model: ESW020MH

## Pedestal Eyewashes



Pedestal Eyewashes with Foot  
Padel, Stainless Steel with Yellow  
Epoxy Coating, Standard, Model:  
ESW030YS-F



Pedestal Eyewashes, Stainless  
Steel with Yellow Epoxy  
Coating, High Configuration,  
Model: ESW030YH

## Drench Shower



Drench Shower, Stainless Steel,  
Model: ESW050M



Drench Shower, Stainless Steel  
with Yellow Epoxy Coating,  
Model: ESW050Y

## Deck Mounted Eyewashes



Deck Mounted Eyewashes, Stainless Steel  
with Yellow Epoxy Coating, High  
Configuration, Model: ESW040YH



Deck Mounted Eyewashes, Stainless  
Steel with Yellow Epoxy Coating,  
Standard, Model: ESW040YS





## FreeZone 2.5 Liter -50C / -84C Benchtop Freeze Dryers

FreeZone 2.5 Liter Benchtop Freeze Dryers are designed for lyophilizing light sample loads. The compact design is ideal for labs with limited floor space. The upright stainless steel collector coil holds 2.5 liters of ice before defrosting.

- A single 1/3 hp HCFC/CFC-free refrigeration system cools the collector to **-50° C (-58° F)**, suitable for aqueous samples.
- Two 1/3 hp HCFC/CFC-free refrigeration systems cool the collector to **-84° C (-119° F)**, suitable for samples with low eutectic points including acetonitrile.



## FreeZone 4.5 Liter -50C / -84C / -105C Benchtop Freeze Dryers



FreeZone 4.5 Liter Benchtop Freeze Dryers are designed for lyophilizing light to moderate sample loads. The compact design is ideal for labs with limited floor space. The upright stainless steel collector coil holds 4.5 liters of ice before defrosting.

- A single 1/3 hp HCFC/CFC-free refrigeration system cools the collector to **-50° C (-58° F)**, suitable for aqueous samples.
- Two 1/3 hp HCFC/CFC-free refrigeration systems cool the collector to **-84° C (-119° F)**, suitable for low eutectic point samples including acetonitrile.
- Two 1/2 hp HCFC/CFC-free refrigeration systems cool the collector to **-105° C (-157° F)** at 60 Hz or **-102° C (-152° F)** at 50 Hz, suitable for low eutectic point samples including acetonitrile and dilute methanol and ethanol.

Lyo-Works™ OS provides a real time display of collector temperature, vacuum level and optional End-Zone™ end point detection system, shown on a 5" full color, capacitive touchscreen. Models with PTFE-coated collectors that can withstand corrosive compounds are available.

- **Stay Connected**
- **View Real-Time Sample Data**
- **Get Consistent, High Quality Results**
- **Make Challenging Samples Easy**



## Laboratory Glassware Washers

Labconco glassware washers are designed with specialized features to provide superior cleaning, meeting the demands of laboratories.



### SteamScrubber Glassware Washers

SteamScrubber Glassware Washers are designed to wash and dry a wide variety of wide-mouth and general purpose labware. Utilizing a brilliant 5" touchscreen display featuring CleanWorks OS, users have full control of wash parameters and washer settings. Able to reach a maximum wash temperature of 93° C (199° F), stubborn contaminants are easily removed. Heated air is forced into the chamber, effectively drying glassware to completion.



### FlaskScrubber Glassware Washers

Designed for narrow-neck glassware such as volumetric and Erlenmeyer flasks. Lower spindle rack with 36 spindles (included) uses direct injection to clean labware inside and out. Optional specialized inserts to wash pipettes, BOD bottles, petri dishes, culture tubes, utensil, etc. are available.



### FlaskScrubber Vantage Series Glassware Washers

FlaskScrubber Vantage Series Glassware Washers have specialized features for contamination-sensitive research. They are designed to wash and dry narrow-neck and general purpose glassware. Able to reach wash temperatures up to 93° C (199° F) which can remove lipids and sanitizes glassware.



## Fume Hood & Enclosures



Discover the perfect laboratory fume hood solution for your unique needs from Labconco, one of the world's leading fume hood manufacturers. We offer extensive range of chemical fume hoods to support diverse applications:

- Chemical fume hoods - safeguards your laboratory environment with unsurpassed chemical containment features
- Ductless fume hoods - Offering flexibility, efficiency, and exceptional air filtration capabilities
- Floor-mounted fume hoods - Combine optimal ventilation with a spacious interior for your application
- Special Application Fume Hoods - PVC and stainless steel hoods for use with perchloric acid, acid digestion, radioisotopes. Or ask about custom chemical containment solutions.

## Biological Safety Cabinets & Enclosures

Labconco offers biosafety cabinets appropriate for all biosafety level environments. Type A2, B2 and C1 Class II biosafety cabinets can accommodate BSL-2, BSL-3 and BSL-4 (with appropriate PPE), and Purifier Class I biosafety enclosures offer BSL-2 protection for applications that do not require product protection.

Purifier Logic+ Class II, Type A2 and Type B2 biological safety cabinets provide personnel, product and environmental protection from hazardous particulates. Type A2 cabinets recirculate HEPA filtered air, and Type B2 biosafety cabinets duct 100% of filtered air to the exterior.

### Compliance

- ETL listed
- NSF International listed
- ADA-compliant (height of controls and receptacles)
- CE Conformity marking (230V models)
- ISO 5 conditions per ISO 14644-1 and 2
- Available size 3,4,5 & 6 feet width

## Protector Filtered Glove Boxes

Protector Filtered Glove Boxes provide inlet and outlet HEPA or ULPA filtration and a leak-tight physical barrier to protect the operator from exposure to potentially hazardous materials.

These glove boxes feature particulate containment <20 nanograms per cubic meter as confirmed by Safebridge Consultants, Incorporated and also meet ISO Class 3 standards.





For over 75 years, Alconox has been the recognized leader in detergents, used extensively in the laboratory, pharmaceutical, biotech, medical device, healthcare, electronics, solar, food, nuclear, optics, cannabis and cosmetics industries. The aqueous detergents and cleaners span the range from acidic to neutral to alkaline, low and higher foaming, powder and liquid concentrates, phosphate and phosphate-free, to meet virtually any critical cleaning challenge.

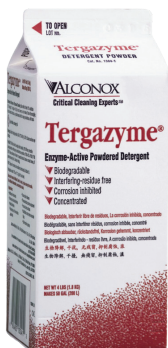
**New packaging**



Alconox®  
Powdered Precision Cleaner



Alcojet®  
Low-foaming Powdered Detergent



Tergazyme®  
Enzyme-Active Powdered Detergent



Citranox®  
Acid Cleaner and Detergent



Liquinox®  
Critical Cleaning Liquid Detergent



Detonox®  
Ultimate Precision Cleaner



Citrajel®  
Low-Foaming Liquid Acid Cleaner



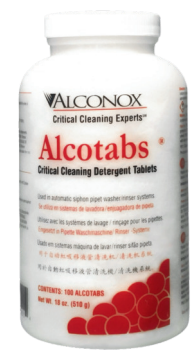
Detergent 8®  
Low-Foaming Ion-Free Detergent



Ledizolv®  
Lead Specific Cleaner



Luminox®  
Low-Foaming Neutral Cleaner



Alcotabs®  
Critical Cleaning Detergent Tablets



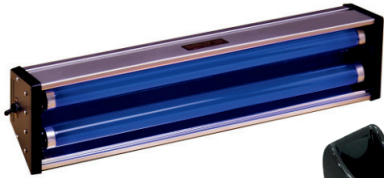
Tergajet®  
Low-Foaming Phosphate-Free Powder



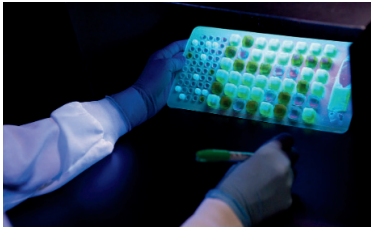
Solujet®  
Low-Foaming Phosphate-Free Liquid Detergent

**Packing size available in**  
1x4 lb box(1.8kg) , 9x4 lb box (9x1.8kg) , 25 lb box (11kg)  
50 lb box (22.5kg) , 100 lb drum (45kg)

**Lab & Life Science - FLUORESCENCE ANALYSIS WORKSTATION**



portable and space-saving mini cabinet designed for personal darkroom use, featuring an Ultraviolet Light source. This cabinet is equipped with the E Series ENF-260C Handheld Ultraviolet (UV-A) Blacklight Lamps.



CM Series Fluorescence Analysis Viewing Cabinet (CM-10A) with ENF-260C UV Lamp



UV Absorbing Safety Glasses, Orange



UV Absorbing Protective Safety Glasses (CE Approved)



Fluorescence Enhancing UV Protective Safety Glasses



**OptiMax Multi-Lite LED Alternate Light Source (ALS) Inspection Kit**



Q-Series Ultraviolet (UV) Blacklight Magnifier Woods Exam Lamp, 4 Watt, 4 Tube



CM Series Fluorescence Analysis Viewing Cabinet (CM-10A) with ENF-240C UV Lamp



# WALZ

## JUNIOR-PAM

### Teaching Chlorophyll Fluorometer

- Optimized for classroom teaching by small size and ease of operation.
- Controlled and powered by PC via USB line.
- WinControl-3 software for basic and advanced experiments.
- Quantity discount for internship equipment



## MINI-PAM-II

### Photosynthesis Yield Analyzer

- Compact housing with integrated computer
- Internal PAR sensor
- Red and blue light versions, both including far-red light

## GFS-3000

### Portable gas exchange

- Control Unit 3200-C containing the CO<sub>2</sub> and H<sub>2</sub>O analyzer, as well as all components required for the CO<sub>2</sub>, H<sub>2</sub>O and flow control
- Standard Measuring Head 3010-S featuring high application flexibility containing the ventilation system, temperature and light control



## DIVING-PAM-II

### Underwater Fluorometer with Miniature Spectrometer

- System package with underwater spectrometer
- Operating range up to 50 m diving depth
- Internal PAR sensor
- Red or blue plus far-red light

## Highest Caging Density in the Industry

Our high-density caging helps optimize facility space, with efficient, flexible, and environmentally friendly manufacturing processes providing green-energy savings.

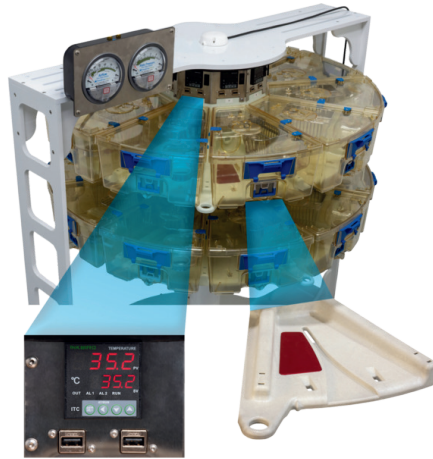
### EXHAUST VENTILATED CAGING SYSTEM

Features;

- Motor Free Technology
- Best environment for animals and their caregivers
- The Opti Carousel System



Optirat® Plus Cage



SMART System



Optimice®



Ergomice®



Optirat® Plus



Optirat® GenII System

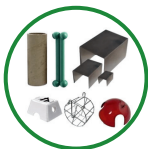


## Animal Care Product

Able Scientific offers a wide range of animal care products, including shipping containers and nutritious food, for animal laboratory needs.



Pura Enrichment Bedding



Pura Enrichment Devices



Hydration H2O Gel



Animal Shipping Container



Animal Feed, Treats & Pallets



Filter Paper



Cage Liners

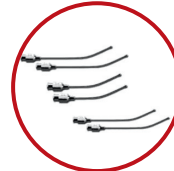
## Animal Surgical Equipment



Sutures



Scalpels, Blade & lancet



Gavage Needle / Feeding Needle



Animal Identification & labels



Rodent Cages & Accessories



Animal Transfer Station



Bedding Disposal & Allergen Control



Lifting and Weighing for Animal



Humane Euthanasia



Multi-parameter Monitor for animal



Flexible Film Isolators



Surgery Table



VIRKON DISINFECTANT



F10SC VETERINARY DISINFECTANT



BioHazard & Autoclave bags



Rack / Trolley for Rat Cages



Water Feeding Bottle



Polycarbonate Mice Cage



Polypropylene Mice Cage



Animal Restrainer  
(Flat Bottom Style)



Animal Restrainer  
(Tail Access Type)



Polycarbonate Rat Cage



Polypropylene Rat Cage



Metabolic Cages



Metabolic Cages for Large Rodents



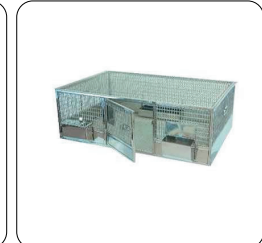
Diuresis Cages



Rabbit Caging



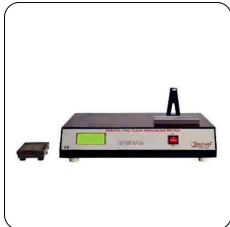
Guinea Pig Pans



Quail/Bird Cages



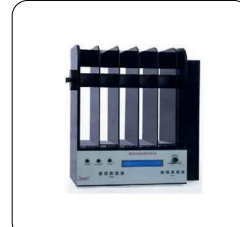
Hot Plate Analgesia Meter



Tail Flick Analgesia Meter



Paw Pressure Analgesia Meter



Rotarod Apparatus



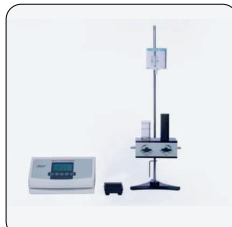
Treadmill for Rodents



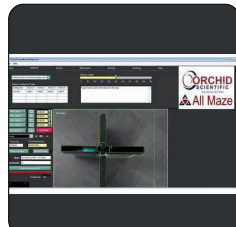
Infra-Red Actimeter



Grip Strength Meter



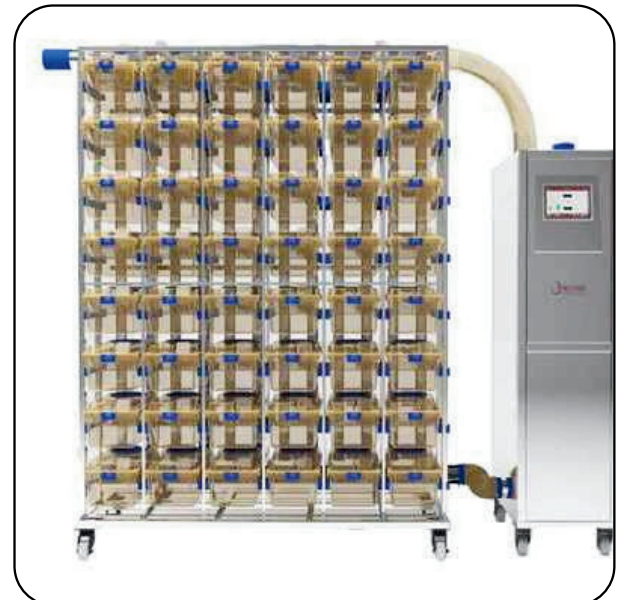
Plethysmometer



Maze for All Maze Video Tracking

### INDIVIDUALLY VENTILATED CAGING SYSTEM

- Safe & Easy Locking
- Card holder fitting on the edge gives visibility of animal inside the cage.
- External self centring water bottle enabling quick bottle change without removing cage.
- Easily Replaceable Breathing Filter
- Excellent Lid and Tray Stacking





**Histopathological Diagnosis**



Minux® Rotary Microtomes



Minux® Rotary Cryostats

**Lab Animal Research Equipment**



Laser Speckle Imaging System



Stereotaxic Instruments



Single Cell Suspension  
Dissociator



Laboratory Animal Anesthesia Machines

**Veterinary Medical Equipment**



Veterinary Anesthesia Machines



Animal Ventilators

**Cell and Molecular Biology**



C100 Automated Cell Counter



D180 CO2 Incubator



Veterinary Monitors  
and Capnograph



Veterinary Dental Solutions



High Speed Centrifuge



**RotaRod Test for Mice and Rats**

IITC's Rotarod Treadmills are used to assess the effect of drugs, motor coordination and fatigue resistance on mice and rats using one unit.



**Animal Treadmill for Mice and Rats**

The 800 Rodent Treadmill is a general purpose exerciser for mice and rats that can be expanded up to five (5) lanes.



You Spoke...  
...We Listened



The all NEW  
Mouse Rat  
Blood Pressure System



Mouse and Rat Tail Cuff Blood Pressure Systems from 1-24 Animals

The IITC Life Science tail cuff plethysmography blood pressure systems can be configured from 1-24 animals.



**Rodent Restrainers for mice and rats**

IITC rodent restrainers are used with the noninvasive blood pressure tail cuff method systems for mice and rats they can also be used for tail vein injections or other studies where the animal needs to be restrained.



Plantar Test Hargreaves Method



Plantar Test Glass Stand



Electronic von Frey Anesthesiometer



Randall Selitto test Paw Pressure Test Meter



Plethysmometer, Paw Volume Meter or Paw Edema Meter



Quattro - 4 in 1 Electronic von Frey Plethysmometer - Randall Selitto-Grip Strength Meter



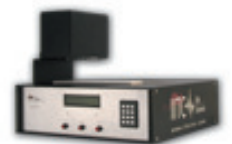
Grip Strength Meter Mice and Rats



Hot plate Test Analgesia Meter Apparatus



Incapacitance Meter Apparatus



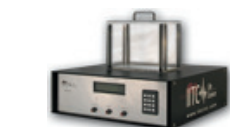
Tail Flick Test Analgesia Meter Apparatus



Flowmeter/Regulators



Thermometer Probes



Hot Cold Plate Analgesia Meter





Fabric Heating Mantle



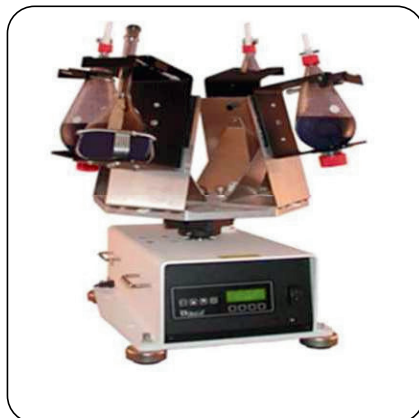
Stirring Mantle



Aluminum Housed Mantle



Rugged Rotator



Benchtop Shaker



Multipulse Vortexer



Basic Evaporator



Heating Tapes and Cords



Pneumatic Egg Punch



CryoStock Series, with Canisters

**CryoStock Series** containers are made of light-weight aluminum alloy and have multilayer thermal insulation for long-term static state storage of various items. They come in two types: large capacity and long shelf life and are mainly used in animal husbandry and laboratories. Optional accessories are available.



IRE-2011/2012 Desktop Rotary Evaporator (Lab-scale)



IR-series Rotary Evaporator (Pilot-scale)

The IRE-Z series **Rotary Evaporator** is a floor-standing device used for large-scale concentration, drying, extraction, and sample recovery. It has a large-capacity and large-diameter rotary evaporation bottle that increases the evaporation area. It is ideal for mass production in chemical industry, medicine, food, environmental protection, scientific research laboratories, colleges, universities, and industrial and mining units.



IRE-series Rotary Evaporator (Pilot-scale)



**CryoSalvum Series** liquid nitrogen containers offer low liquid nitrogen consumption and medium range storage capacity for cryopreservation of large capacity samples. They are lightweight, space-efficient, and come with racks and lockable lids for sample safety. Mainly used in medical, bio-bank, and laboratory fields.



CryoSalvum Series, with Racks & Boxes

**CryoAutosupply Series** liquid nitrogen tanks are high-performance containers used for liquid nitrogen storage in central laboratories. They generate low amounts of liquid vaporization to supply liquid nitrogen to other containers.

**Stainless steel shell Ice Maker**

Innova stainless steel shell ice maker, the external shell is made of SUS304 stainless steel. It provides two types of ice, Bullet type & Flake ice, which is widely used in hospital, pharmacy industry, laboratory, research institute, chemical industry etc.



Nova-Smart EU/U ASTM Type I & Type II / Clinical Laboratory Reagent Water (CLSI)

Nova EU is all-in-one system produces ASTM Type I & Type II water / Clinical Laboratory Reagent Water (CLSI), equipped with TOC monitor and Siemens EDI module. Two-stage reverse osmosis system ensures the quality of water produced and provides excellent inlet water to the EDI module behind. Dual wavelength UV-lamp 254nm & 185nm.

**Split type Ice Maker**

INNOVA split type Ice Maker provides various types of ice, Flake ice, Cube ice, Crescent ice, Scale ice, Nugget ice. High production capacity, long temperature holdover time. It is suitable for huge consumption of ice.



Fan cooling portable vaccine cooler



-25°C Biomedical Freezer



ULT Freezer (-86°C)



-40°C Biomedical freezer



-40°C Biomedical freezer



Portable Mini CO<sub>2</sub> Incubator MiniCell  
NB203M



CO<sub>2</sub> Incubator with Built-in Roller  
NB203QR



MINI CO<sub>2</sub> INCUBATOR / NB203  
42 LITER



MEDIUM CO<sub>2</sub> INCUBATOR / NB203XL  
179 LITER



LARGE CO<sub>2</sub> INCUBATOR / NB203XXL  
850 LITER

Large Capacity CO<sub>2</sub> Incubator  
MaxCell  
NBT203XXL

Optimized for Large Scale Cell Container

Excellent Temperature Uniformity & Rapid Heating fo Fast Recovery by 6 side Direct Heating and 4 Air Circulation Fans  
7 Inch Full color LCD Touch Panel  
Various Composition and Divided Glass Door Options



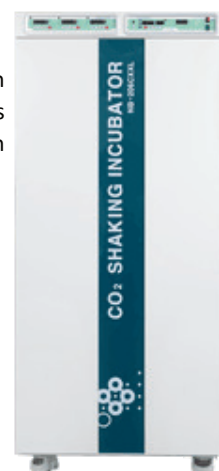
CO<sub>2</sub> Incubator with Built-in Shaker  
NB203QS / NB203QMS / NB206CL



CO<sub>2</sub> Shaking Incubator aniCell

Large capacity CO<sub>2</sub> incubator with removable long life shakers provides optimum solution for cell culture in suspension.

6 sides direct heating  
Pullout shaker platform  
IR CO<sub>2</sub> sensor  
3 shakers (Humidity, heat free)



**MODEL 150VT ULTRASONIC HOMOGENIZER**

The Model 150VT Ultrasonic Homogenizer delivers up to 150 watts of ultrasonic disruption with analog controls for superior sample processing.

This model offers all the advanced engineering features necessary to create a total system for ultrasonic disruption.



AccuCount™ 2000 automated colony counter  
Microscopic Automated Colony Counter



AccuCount™ 1000 automated colony counter  
Macroscopic Automated Colony Counter

**MODEL 300VT ULTRASONIC HOMOGENIZER**

The Model 300VT Ultrasonic Homogenizer delivers up to 300 watts of ultrasonic disruption with analog controls for superior sample processing.

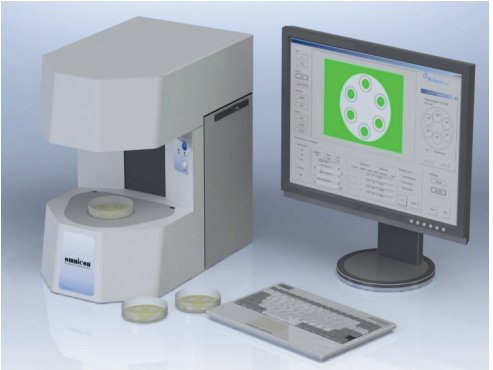
The Model 300VT offers all the advanced engineering features necessary to create a total system for ultrasonic disruption.



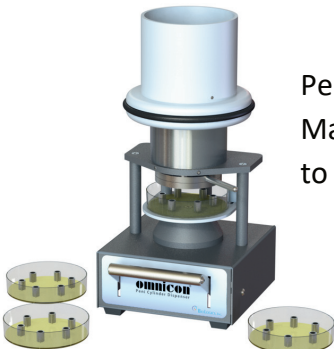
**MODEL 3000 ULTRASONIC HOMOGENIZER**

The Model 3000 Ultrasonic Homogenizer delivers up to 300 watts of ultrasonic disruption with analog controls for superior sample processing.

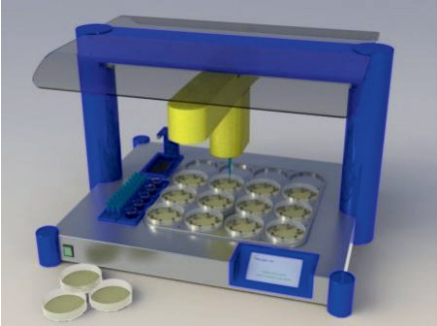
The integrated Sound Abating Chamber reduces cavitation sound emitted during sample processing.



**OMNICON ZONE READER - ANTIBIOTIC POTENCY TESTING**



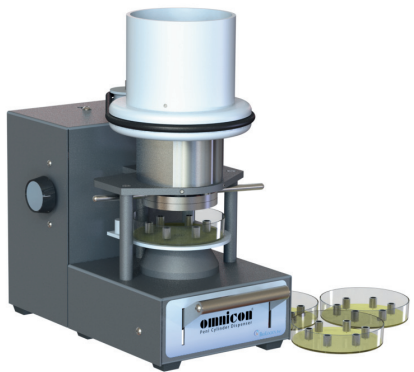
Peni Cylinder Dispenser with Hopper  
Manual Hopper with a capacity of up to 600 Peni Cylinders



**OMNI-NOCLATOR PENI CYLINDER FILLER**

The OMNI-Noculator is a robotic liquid handling system designed to fill Peni Cylinders.

Peni Cylinder Dispenser with Motorized Hopper  
Motorized Hopper with a capacity of up to 600 Peni Cylinders

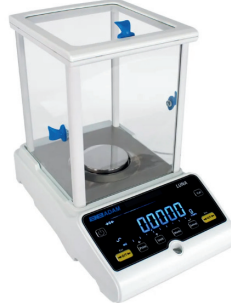






**Solis Analytical and Semi-Micro Balances**

The Solis is ideal for research and quality assurance labs; science education; precision counting; and production and manufacturing applications needing precision results. Users can readily view the comprehensive data on the amply sized graphic display. A multilingual display capability permits use of the balance in various regions. Solis models offer capacities from 120g to 510g and readabilities from 0.01mg/ 0.1mg to 0.0001g.



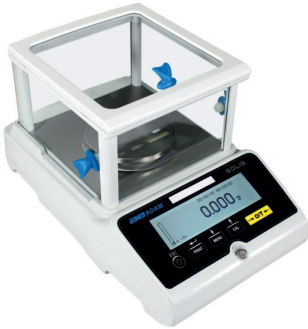
**Luna Analytical Balances**

Luna analytical models offer improved performance for faster, more accurate readings, with stylish, modern backlighting. Eight analytical models offer capacities from 80g to 250g with readabilities from 0.0001g.



**Nimbus® Analytical Balances**

The Nimbus base is made from a single piece of extruded aluminum for better temperature control and stability. The weighing sensor is crafted from a single block with fewer parts, enhancing durability for rigorous laboratory use.



**Solis Precision Balances**

The Solis precision balance features a high-resolution graphic display, precision counting functions, and ability to store up to 99 ingredients. Choose from 11 different models that offer internal or external calibration, capacities from 360g to 3200g, and readabilities from 0.001g to 0.01g.



**Highland® Portable Precision Balances**

Highland® balances are well-suited for lab work, field use, and many industrial applications. The Highland features HandiCal® internal calibration with a built-in mass, and ShockProtect® as a safeguard against shock loading and accidental overload.



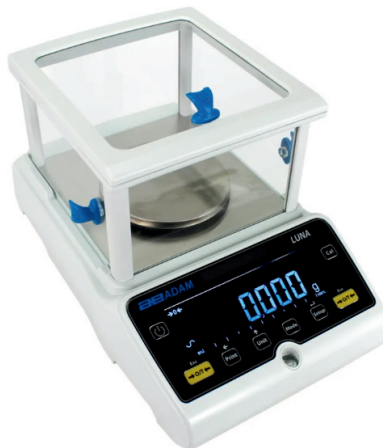
**Nimbus® Heavy Duty Precision Balances**

Nimbus combines an intuitive interface with superior durability. These balances are ideal for parts counting, percentage weighing, density measurement for liquids or solids, and dynamic/animal weighing.



**Aqua® ABW-S Stainless Steel Waterproof Scales**

The Aqua ABW-S scale is waterproof, has overload protection, LED displays, and a removable pan. It is suitable for food processing, batching, and packaging with features like percentage weighing and parts counting. Internal rechargeable battery allows use in areas with limited power, while quick stabilization time increases efficiency.



## Luna Precision Balances

Luna precision balances feature an easy-to-read display with bright 24mm digits against a black background. Additional features include USB and RS-232 interfaces, level indicator and sealed keypad. Choose from 20 different models that offer internal or external calibration, capacities from 220g to 15000g, and readabilities from 0.001g to 0.01g.



#### **LCi T Compact Photosynthesis System**

The NEW LCi T compact photosynthesis system with colour, touch screen display, GPS and LED light units.



#### **AM350 Portable Leaf Area Meter**

The AM350 is a compact and portable leaf area meter suitable for the accurate, non-destructive measurement of leaf area and associated parameters.



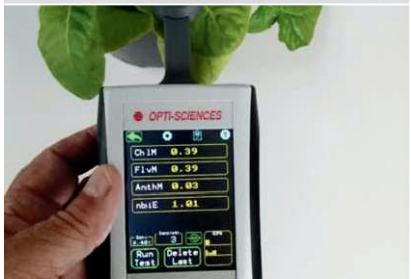
#### **EGA60 Multi-sample soil respiration system**

ADC draws on its 50 years of experience to introduce the next generation of multi-sample, CO<sub>2</sub>/H<sub>2</sub>O analysers.



#### **LCpro T Advanced Portable Photosynthesis System**

The NEW LCpro T advanced portable photosynthesis system with Li-ion batteries, colour touch screen display and integral GPS.



#### **MPM-100 Multi-Parameter-Meter**

The NEW MPM-100 Multi-Parameter-Meter accurately measures anthocyanin, flavonol and chlorophyll. It then uses 2 of these parameters to compute nitrogen balance index.



#### **SRS1000 T Portable Soil Respiration System**

The SRS1000 T is ultra compact and portable. It is an exceptionally easy to use, affordable, research instrument.





Delta-T Devices

The WET150 Kit is a portable and rugged solution for researchers who need to assess moisture and salinity conditions in soils and substrates.

The Kit makes fast soil/substrate measurements of three crucial variables that influence plant growth: moisture content, temperature\*, and electrical conductivity (EC) – a strong indicator of the general nutrient level.

The ML3 ThetaKit provides researchers with a portable tool for highly accurate, near instantaneous measurement of moisture levels in soils and substrates.



### Data Loggers and Meters

Stomatal aperture is the dominant factor in the diffusion conductance of leaf surfaces, which controls both the water loss from plant leaves and the uptake of CO<sub>2</sub> for photosynthesis.



GP2 Data Logger and Controller



DL6 Data Logger



DL6 Data Logger



HH2 Moisture Meter



WinDIAS Leaf Image Analysis System



AP4 Porometer



SS1 SunScan Canopy Analysis System



WS-GP2 Advanced Automatic Weather Station System

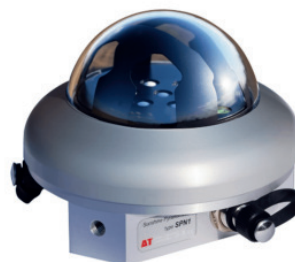
The advanced WS-GP2 Automatic Weather Station is based on the powerful GP2 Data Logger. It is an ideal solution for research and environmental monitoring applications at remote and exposed sites.



WET KIT and WET-2 Sensor



PR2 Profile Probe



SPN1 Sunshine Pyranometer



Infrared Temperature Sensors

Dynamax has created three new transpiration, leaf canopy monitoring systems. Each system observes the IRT leaf canopy and the weather and produces data for precision ag management.



InteliMet Advantage 5

- GMX500 Compact weather station
- Wind Speed & Direction Measurement
- Air Temperature Measurement
- Relative Humidity Measurement
- Barometric Pressure Measurement
- Solar Radiation Measurement
- Dew Point Measurement
- Lightning rod



InteliMet Advantage 6

- GMX600 Compact weather station
- Wind Speed & Direction Measurement
- Optical Rain Gage
- Air Temp & Relative Humidity Measurement
- Barometric Pressure Measurement
- Solar Radiation Measurement
- Dew Point Measurement
- Lightning rod



Infrared Temperature Sensors

The new IR-TDoc™ wireless infrared temperature system is the latest development in infrared body temperature sensing technology for monitoring applications in building, crowds or employee screening.



The TH20 is a new way to measure volumetric soil moisture content. It combines ease of use and accuracy with low cost, to give growers, land managers and engineers immediate precise soil moisture data. The probe is reliable even in saline soils and its compact size means minimal substrate disturbance.



Plant Growth Sensors

The DEX20, DEX70, DEX100 and DEX200 are highly precise electronic dendrometers that measure the growth and size of plant stems and fruits. The effects of environmental factors on the water balance of plants and stem size variations over time are easily monitored with a temperature compensated dendrometer.



# APIEZON®



## Apiezon AP100 Grease

Apiezon AP100 vacuum grease is silicone-free with PTFE, providing high lubricity. It offers eight times more lubrication than standard greases. Suitable for ambient temperatures, consider Apiezon AP101 or H Grease for higher temperatures.



## Apiezon AP101 Grease

Apiezon AP101 is a versatile, silicone-free hydrocarbon grease for industrial and scientific use, with anti-seize properties for glass and metal surfaces, containing PTFE for long-lasting lubrication and protection.



## Apiezon H Grease

Apiezon H Grease is a silicone-free high vacuum grease with superior 'stiction' and thermal conduction properties, suitable for high-temperature applications in scientific and industrial environments. It is approved by BAE Systems, the European Space Agency, and NASA.



## Apiezon L Grease

Apiezon L Grease is a silicone and halogen-free ultra-high vacuum grease preferred by organizations such as The European Space Agency, NASA, and NATO. It has the best vapor pressure properties among Apiezon products and is ideal for ultra-high vacuum applications at ambient temperatures.



## Apiezon M Grease

Apiezon M Grease is a silicone and halogen-free high vacuum grease suitable for various high vacuum applications and also used in scientific and industrial settings. It is approved for NATO use and works best at ambient temperatures. For higher temperature applications, consider Apiezon AP101 or Apiezon H Grease.



## Apiezon N Grease

Apiezon N Grease is silicone-free and widely recognised and recommended as the cryogenic vacuum grease of choice. This cryogenic grease is specially formulated to exhibit craze-free performance characteristics at low temperatures and withstand frequent cycling between cryogenic temperatures as low as -273°C and +30°C.



## Apiezon T Grease

Apiezon T Grease is a silicone-free medium temperature vacuum grease renowned for its quality and tenacity. Apiezon T Grease has gained approval from prestigious organisations including NATO and the US Navy.



## Apiezon PFPE 501 Grease

Apiezon PFPE 501 vacuum grease is a chemically inert, high temperature lubricant. With an upper operating temperature of 250°C and vapour pressure of  $1.3 \times 10^{-12}$  at 25°C, it is robust, versatile and can be used for sealing and lubricating under the most extreme operating conditions. This includes environments where aggressive chemicals and strong oxidising agents are regularly used.



**EdvoCycler™ Jr. Personal PCR Machine**

The EdvoCycler™ Jr. Personal PCR Machine is the newest member of our PCR family and is based on the advanced EdvoCycler™ 2 platform. The sleek form factor has been miniaturized with 16 wells to run individual PCR experiments. A vivid and intuitive touchscreen and onboard computer simplify operation by not requiring a secondary device.



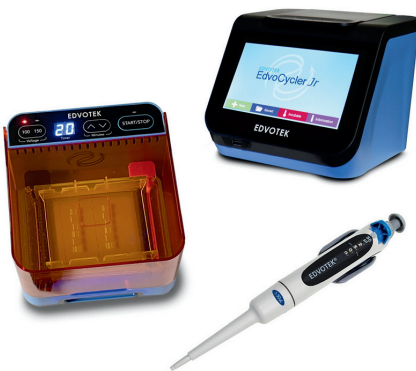
**QuadraSource™ Power Supply**

Power any combination of EDVOTEK® electrophoresis units with this mighty power supply! Features an easy-to-use, full programmable interface for setting voltage, current or timer control with each parameter displayed in real-time. Programs may be paused or resumed at any point.



**EdvoCycler™ 2 Classroom PCR Machine**

The successor to the bestselling EdvoCycler™ has been redesigned with improved PCR technology to be the best value among classroom thermal cyclers. The EdvoCycler™ 2 doubles the capacity of the original at 48 wells and features an intuitive touchscreen.



**EDGE™ PCR LabStation™**



**EDGE™ Integrated Electrophoresis System**



**NEW Built-in Features**

GENEROUS Trade-in  
Complete Physiology Lab Kits with  
WIRELESS ECG/EMG

**Human | Animal | Biomedical  
Exercise | Psychology | Neurobiology**



**RS-EMG-SA: Small Animal EMG System**



**Intracardiac ECG System**



**ROAM Wireless ECG & Respiration**



**SRS-100 Stimulus Response System**



**IX-EEG 10-20 system EEG Recorder**



**BMK-TA Behavioral Marketing Kit**







Go Direct® Temperature Probe



Go Direct® Wide-Range Pressure Sensor



Davis Instruments AirLink® Air Quality Monitor



Go Direct® Platinum-Cell Conductivity Probe



Go Direct® Static Charge



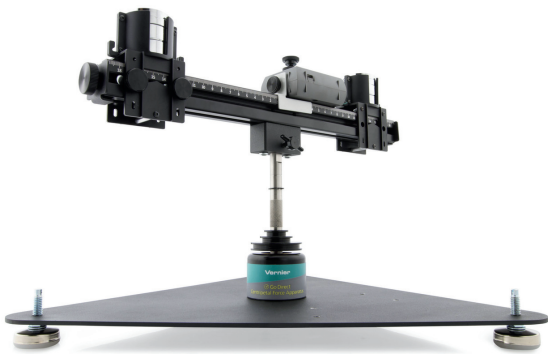
Go Direct® CO2 Gas Sensor



Go Direct® Gas Pressure Sensor

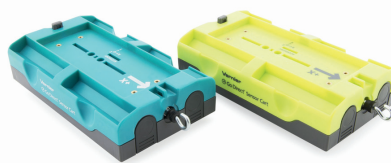


Go Direct® Force and Acceleration Sensor



### Go Direct® Centripetal Force System

The Go Direct Centripetal Force Apparatus and Go Direct Force and Acceleration Sensor make an ideal combination to explore rotational dynamics.



Go Direct® Sensor Cart



Go Direct® SpectroVis® Plus Spectrophotometer

### LabQuest 3

LabQuest® 3 is a powerful, advanced, easy-to-navigate, and versatile data-logging solution for STEM students. The built-in data-collection and analysis app works with all Vernier sensors, supporting hands-on data collection in the classroom, in the lab, and in the field.



Physiology Go Direct® Standard Package



Physics Go Direct® Standard Package



Chemistry Go Direct® Starter Package

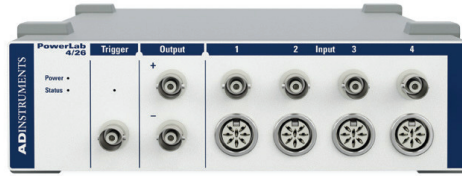


Solar Energy Explorations Go Direct® Package

# ADINSTRUMENTS



**PowerLab 15T**  
Entry level integrated data recording featuring a dual Bio Amp, an isolated stimulator and 2 analog inputs.



**PowerLab 26 Series**  
Built for precision, our 26 Series Research PowerLabs are engineered to give you high quality, reproducible data from analog signals while meeting the strictest international safety standards.



**PowerLab C**  
PowerLab C is a digital data acquisition device that provides adaptive mains filtering, power management for peripheral devices (max 100W via USB-PD) and sub- $\mu$ S time synchronization for up to four C Series compatible USB-C devices (currently up to 32 channels).



Education PowerLabs can also be used with LabChart analysis software for teaching purposes (sold separately). Using research grade software can help form the foundation for your advanced undergraduate and postgraduate labs. Our LabChart experiments allow students to work through complex methods step by step, building knowledge of important physiological concepts.



PowerLab 2/26



**PowerLab 26T**  
Integrated data recording featuring a dual Bio Amp, an isolated stimulator, trigger input, 4 analog inputs, 8 digital inputs and 8 digital outputs.

## Complete Systems and Kits



EOG Kit



Exercise Physiology Kit



Human Respiratory Kit



Reflex Kit



Wireless Heart Rate Kit



PowerLab C Rodent Langendorff Foundation System



Teaching Pharmacology Kits



Nerve and Muscle Kits



Biochemistry Kit



# PURITE

## Purite Remote Dispenser

Ultrapure water at your fingertips  
The Purite Remote Dispenser is a part of our bench-top water purification range delivering ultrapure water directly at your lab workstation. This state-of-the-art 'satellite' dispenser can be conveniently and discreetly positioned anywhere on a bench saving valuable lab space and eliminating the need to reach out to the main RO system.



## Purite Labwater

Purite Labwater deionisers  
Type II / Deionised (DI) water  
The Purite Labwater is a simple, cost-effective option for producing low volumes of purified water between 1 and 10µS/cm on-demand. Purite Labwater units can easily be wall-mounted and are simply connected by a conventional hose to a laboratory tap. They operate under standard water pressure, so no additional parts are required.



## Purite Mini Pure Water Boost Pump

For clinical laboratory water  
The Purite Mini Pure Water Boost Pump is designed for use with a wide range of laboratory equipment, providing a consistent flow of pressurised water. Typical applications range from glass washers and environmental chambers, to humidity cabinets and autoclaves.



## Purite Fusion

For clinical laboratory water  
Type I / Ultrapure water (UPW) water  
The Purite Fusion is a self-contained water purification unit that delivers a flow of purified water to a consistent quality of 18MΩ.cm. It is ideal for the most demanding laboratory processes including life sciences, such as histology, cell and tissue culture, DNA sequencing and IVF.



## Purite Analyst

For clinical laboratory water  
Type II / Deionised (DI) water  
The Purite Analyst provides a consistent supply of purified water to a quality better than 1MΩ.cm. It is easy to use and ideal for applications such as glassware rinsing, buffers and stains, reagent make-up, and media preparation.



## Purite HP

For clinical laboratory analyser feed  
Type II / Deionised (DI) water  
Designed for use in laboratory applications, such as HPLC, ion chromatography, atomic absorption, hydrogen generation and clinical analyser feed, the Purite HP produces a consistent flow of purified water to a quality better than 10MΩ.cm.



## Purite Neptune Ultimate

For clinical laboratory water  
Type I / Ultrapure water (UPW) water  
The Purite Select Neptune Ultimate provides a high flow of consistent quality purified 18.2MΩ.cm ultrapure water. The advanced, self-contained unit is ideal for the most challenging laboratory applications, especially analytical and life sciences.



High-quality water is vital in labs for tasks like washing glassware and preparing solutions. Contaminated water can impact diagnostics and instrument efficiency. Maintaining precise water quality is critical for accurate testing and analysis, minimizing errors, and cutting costs.



SINGAPORE

**Labquip (S) Pte Ltd**  
625 Aljunied Road, #03-02  
Aljunied Industrial Complex,  
Singapore 389836  
Tel: +65 6779 2266  
Fax: +65 67783255  
Email : mahendran@labquipasia.com



INDIA

**Labquip (India) Pvt Ltd, "V"**  
Times Square, Office No. 513,  
5th Floor, Plot no.3, Sector-15,  
CBD Belapur, Navi Mumbai-400614, India.  
Tel: +91-22-41275522  
Contact: Mr Sunil Pandey  
Email: sunil@labquipasia.com



THAILAND

**Labquip (Thailand) Limited**  
799/43 Space Lat Phrao-Mengjai Village  
Soi Lat Phrao 80 (Janthima)  
Wangthonglang, Wangthonglang,  
Bangkok 10310, Thailand  
Tel: +662-539-7588, Fax: +622-539-7589/90  
Contact: Chakchai Kitaweeppattana (Chak)  
Email: chakchai@labquipasia.com



INDONESIA

**PT Labquip Indoprima**  
Ruko Prominence RJS 38D  
No.15 Alam Sutera - Serpong  
Tangerang 15810 - Indonesia  
[www.labquipindoprime.co.id](http://www.labquipindoprime.co.id)  
Tel: 021-29853828, 29853829  
Contact: Gelli Nariah



VIETNAM

**Labquip Vietnam**  
No 11, 125 Alley, trung Kinh Str  
Cau Giay District, Hanoi  
Vietnam  
Tel: +84-4-37822196, Fax: +84-4-37822197  
Contact: Nguyen Manh Hien  
Email: hien@labquipasia.com



TAIWAN

**LabIVF-Labquip Taiwan Int'L Co., Ltd**  
6F-17 No.26 Lane 521  
Yangguang Street, Neihu District  
Taipei City 114, Taiwan, R.O.C.  
Tel: +886-22659 5717, Fax: +886-2-2659 5737  
Contact: Gary Peng  
Email: gary@labivf.com



PHILIPPINES

**Labquip Philippines**  
Level 10, Fort Legend Tower, 3rd Ave and 31st Street,  
Bonifacio Global City, Taguig, Philippines  
Tel: +63 2224 2000, Fax: +63 2224 2001  
Contact: Mahendran  
Email: mahendran@labquipasia.com



MALAYSIA

**Labquip (M) Sdn Bhd**  
D-01-02 Block D, Sekitar 26 Enterprise,  
Persiaran Hulu Selangor, Seksyen 26,  
40400 Shah Alam, Selangor Darul Ehsan  
Tel: +603-5614 1777, Fax: +603-5614 4969  
Contact : Mahendran  
Email : mahendran@labquipasia.com

